

AVIAID S1 & S2 External Oil Pumps  
 AVIAID Oil System Accessories  
 Patterson Dry Sump Tanks  
 XRP Hose Systems  
 Setrab Oil Coolers  
 AVIAID Steel Wet Sump Oil Pans  
 AVIAID Steel Dry Sump Oil Pans  
 Fabricated Aluminum Pans  
 ARE Cast Aluminum Pans

**AVIAID DRY SUMP OILING SYSTEMS**  
 10041 Canoga Avenue  
 Chatsworth, CA 91311-3004  
 (818) 998-8991 FAX (818) 998-8993  
**2009 RACER NET/JOBBER PRICE LIST**  
 Prices subject to change without notice  
 Effective: October 1, 2008  
 Supersedes All Previous Price Lists  
 email: aviaid@aol.com website: aviaid.com

**(1)XXXX - Pump Series X(1)XXX - # Stages XX(4)XX - Pressure Section Size XXX(3)X - Scavenge Section Size XXXX(1) - Detail**

**XXXX(0-4) - 5/8" Round shaft w/3/16" key slot for belt drive XXXX(5-9) - Hex Drive**

**Blade Mount Belt Drive Pumps -(2)XXX # of blades -X(1)XX Position 1st blade -XX(21) - Mount ID Number**

**Cam Drive Front Mount Pumps -(7)XXX Hex size in 16th's -X(1)XX Separator Width -XX(67) Mount ID Number**

PART NO	NET US\$	JOBBER	DESCRIPTION
---------	----------	--------	-------------

**SERIES I SINGLE STAGE EXTERNAL WET SUMP PUMPS - BELT OR CAM DRIVE - W/INTEGRAL REGULATOR**

**Single stage pumps only \* XXXX(1) - 1" Longer pump shaft I.e. Right Side Ford Single Stage Pump**

001 11000	549.00	452.93	1 Stage, 1.00" pressure w/ integral regulator
001 11100	549.00	452.93	1 Stage, 1.25" pressure w/ integral regulator
001 11200	574.00	473.55	1 Stage, 1.50" pressure w/ integral regulator
001 11300	587.00	484.28	1 Stage, 1.75" pressure w/ integral regulator
001 11400	599.00	494.18	1 Stage, 2.00" pressure w/ integral regulator
	36.00	29.70	Add for Specialty Format Mounts Including Donovan, Arias, KB, RCD

**SERIES I COMP SINGLE STAGE TWO SECTION CROSSPORTED PUMPS W/INTEGRAL REGULATOR- HEX OR BELT DRIVE**

007 71000	777.40	641.36	1 Stage, 2 section pump with 2 crossported 1.00" engine pressure sections, w/ integral regulator.
007 71100	777.40	641.36	1 Stage, 2 section pump with 2 crossported 1.25" engine pressure sections, w/ integral regulator.
007 71200	810.20	668.42	1 Stage, 2 section pump with 2 crossported 1.50" engine pressure sections, w/ integral regulator.
007 71300	853.00	703.73	1 Stage, 2 section pump with 2 crossported 1.75" engine pressure sections, w/ integral regulator.
007 71400	895.80	739.04	1 Stage, 2 section pump with 2 crossported 2.00" engine pressure sections, w/ integral regulator.

**SERIES I 2 STAGE WET OR DRY SUMP PUMPS - BELT OR CAM DRIVE - APPLICATIONS & MOUNTS ON PAGE 8 - CHOICE OF MOUNTS**

001 12100	732.95	604.68	2 Stage, 1.25" pressure, 1.00" scavenge, w/ integral regulator
001 12110	732.95	604.68	2 Stage, 1.25" pressure, 1.25" scavenge, w/ integral regulator
001 12120	749.35	618.21	2 Stage, 1.25" pressure, 1.50" scavenge, w/ integral regulator
001 12130	770.75	635.87	2 Stage, 1.25" pressure, 1.75" scavenge, w/ integral regulator
001 12140	787.15	649.40	2 Stage, 1.25" pressure, 2.00" scavenge, w/ integral regulator
001 12200	765.75	631.74	2 Stage, 1.50" pressure, 1.00" scavenge, w/ integral regulator
001 12210	749.35	618.21	2 Stage, 1.50" pressure, 1.25" scavenge, w/ integral regulator
001 12220	765.75	631.74	2 Stage, 1.50" pressure, 1.50" scavenge, w/ integral regulator
001 12230	787.15	649.40	2 Stage, 1.50" pressure, 1.75" scavenge, w/ integral regulator
001 12240	803.56	662.94	2 Stage, 1.50" pressure, 2.00" scavenge, w/ integral regulator

**SERIES I 3 STAGE DRY SUMP PUMPS - BELT OR CAM DRIVE - APPLICATIONS & MOUNTS ON PAGE 8 - CHOICE OF MOUNTS**

001 13000	844.00	696.30	3 Stage, 1.00" pressure, 1.00" scavenge
001 13010	844.00	696.30	3 Stage, 1.00" pressure, 1.25" scavenge
001 13020	844.00	696.30	3 Stage, 1.00" pressure, 1.50" scavenge
001 13030	844.00	696.30	3 Stage, 1.00" pressure, 1.75" scavenge
001 13040	844.00	696.30	3 Stage, 1.00" pressure, 2.00" scavenge
001 13100	844.00	696.30	3 Stage, 1.25" pressure, 1.00" scavenge
001 13110	844.00	696.30	3 Stage, 1.25" pressure, 1.25" scavenge
001 13120	859.40	709.01	3 Stage, 1.25" pressure, 1.50" scavenge
001 13130	875.80	722.54	3 Stage, 1.25" pressure, 1.75" scavenge
001 13140	892.20	736.07	3 Stage, 1.25" pressure, 2.00" scavenge
001 13210	854.00	704.55	3 Stage, 1.50" pressure, 1.25" scavenge
001 13220	875.00	721.88	3 Stage, 1.50" pressure, 1.50" scavenge
001 13230	891.40	735.41	3 Stage, 1.50" pressure, 1.75" scavenge
001 13240	907.80	748.94	3 Stage, 1.50" pressure, 2.00" scavenge
001 13310	870.40	718.08	3 Stage, 1.75" pressure, 1.25" scavenge
001 13320	890.60	734.75	3 Stage, 1.75" pressure, 1.50" scavenge
001 13330	923.20	761.64	3 Stage, 1.75" pressure, 1.75" scavenge
001 13340	939.60	775.17	3 Stage, 1.75" pressure, 2.00" scavenge
001 13410	886.80	731.61	3 Stage, 2.00" pressure, 1.25" scavenge
001 13420	906.20	747.62	3 Stage, 2.00" pressure, 1.50" scavenge
001 13430	939.60	775.17	3 Stage, 2.00" pressure, 1.75" scavenge
001 13440	972.40	802.23	3 Stage, 2.00" pressure, 2.00" scavenge

**SERIES I 4 STAGE DRY SUMP PUMPS - BELT OR CAM DRIVE - APPLICATIONS & MOUNTS ON PAGE 8 - CHOICE OF MOUNTS**

001 14000	1009.00	832.43	4 Stage, 1.00" pressure, 1.00" scavenge
001 14010	1009.00	832.43	4 Stage, 1.00" pressure, 1.25" scavenge
001 14020	1024.40	845.13	4 Stage, 1.00" pressure, 1.50" scavenge
001 14030	1040.80	858.66	4 Stage, 1.00" pressure, 1.75" scavenge
001 14040	1057.20	872.19	4 Stage, 1.00" pressure, 2.00" scavenge
001 14100	1018.00	839.85	4 Stage, 1.25" pressure, 1.00" scavenge
001 14110	1018.00	839.85	4 Stage, 1.25" pressure, 1.25" scavenge

PART NO	NET US\$	JOBBER	DESCRIPTION
001 14120	1034.40	853.38	4 Stage, 1.25" pressure, 1.50" scavenge
001 14130	1067.20	880.44	4 Stage, 1.25" pressure, 1.75" scavenge
001 14140	1083.60	893.97	4 Stage, 1.25" pressure, 2.00" scavenge
001 14200	1033.60	852.72	4 Stage, 1.50" pressure, 1.00" scavenge
001 14210	1033.60	852.72	4 Stage, 1.50" pressure, 1.25" scavenge
001 14220	1050.00	866.25	4 Stage, 1.50" pressure, 1.50" scavenge
001 14230	1082.80	893.31	4 Stage, 1.50" pressure, 1.75" scavenge
001 14240	1099.20	906.84	4 Stage, 1.50" pressure, 2.00" scavenge
001 14320	1096.00	904.20	4 Stage, 1.75" pressure, 1.50" scavenge
001 14420	1105.00	911.63	4 Stage, 2.00" pressure, 1.50" scavenge
<b>SERIES I 5 STAGE DRY SUMP PUMPS - BELT OR CAM DRIVE - APPLICATIONS &amp; MOUNTS ON PAGE 8 - CHOICE OF MOUNTS</b>			
001 15000	1124.00	927.30	5 Stage, 1.00" pressure, 1.00" scavenge
001 15010	1124.00	927.30	5 Stage, 1.00" pressure, 1.25" scavenge
001 15020	1139.40	940.01	5 Stage, 1.00" pressure, 1.50" scavenge
001 15030	1155.80	953.54	5 Stage, 1.00" pressure, 1.75" scavenge
001 15040	1172.20	967.07	5 Stage, 1.00" pressure, 2.00" scavenge
001 15100	1133.00	934.73	5 Stage, 1.25" pressure, 1.00" scavenge
001 15110	1133.00	934.73	5 Stage, 1.25" pressure, 1.25" scavenge
001 15120	1149.40	948.26	5 Stage, 1.25" pressure, 1.50" scavenge
001 15130	1182.20	975.32	5 Stage, 1.25" pressure, 1.75" scavenge
001 15140	1198.60	988.85	5 Stage, 1.25" pressure, 2.00" scavenge
001 15200	1148.60	947.60	5 Stage, 1.50" pressure, 1.00" scavenge
001 15210	1148.60	947.60	5 Stage, 1.50" pressure, 1.25" scavenge
001 15220	1165.00	961.13	5 Stage, 1.50" pressure, 1.50" scavenge
001 15230	1197.80	988.19	5 Stage, 1.50" pressure, 1.75" scavenge
001 15240	1214.20	1001.72	5 Stage, 1.50" pressure, 2.00" scavenge
001 15320	1211.00	999.08	5 Stage, 1.75" pressure, 1.50" scavenge
001 15420	1220.00	1006.50	5 Stage, 2.00" pressure, 1.50" scavenge
<b>SERIES I SINGLE SECTION NON-REGULATOR PUMPS</b>			
003 31600	373.40	308.06	1 Stage, .600" scavenge
003 31800	373.40	308.06	1 Stage, .840" scavenge
003 31000	373.40	308.06	1 Stage, 1.000" scavenge
003 31100	389.00	320.93	1 Stage, 1.250" scavenge
003 31200	404.60	333.80	1 Stage, 1.500" scavenge
003 31300	420.20	346.67	1 Stage, 1.750" scavenge
003 31400	435.80	359.54	1 Stage, 2.000" scavenge
<b>SERIES I 2 STAGE NON-REGULATOR PUMPS</b>			
003 32660	521.25	430.03	2 Stage, .600" pressure, .600" scavenge
003 32880	521.25	430.03	2 Stage, .840" pressure, .840" scavenge
003 32000	521.25	430.03	2 Stage, 1.00" pressure, 1.00" scavenge
003 32100	552.45	455.77	2 Stage, 1.25" pressure, 1.00" scavenge
003 32200	583.65	481.51	2 Stage, 1.50" pressure, 1.00" scavenge
003 32300	614.85	507.25	2 Stage, 1.75" pressure, 1.00" scavenge
003 32400	646.05	532.99	2 Stage, 2.00" pressure, 1.00" scavenge
<b>SERIES I 3 STAGE NON-REGULATOR PUMPS</b>			
003 33660	683.90	564.22	3 Stage, .600" pressure, .600" scavenge
003 33880	683.90	564.22	3 Stage, .840" pressure, .840" scavenge
003 33000	683.90	564.22	3 Stage, 1.00" pressure, 1.00" scavenge
003 33110	715.10	589.96	3 Stage, 1.25" pressure, 1.25" scavenge
003 33220	746.30	615.70	3 Stage, 1.50" pressure, 1.50" scavenge
003 33330	777.50	641.44	3 Stage, 1.75" pressure, 1.75" scavenge
003 33440	808.70	667.18	3 Stage, 2.00" pressure, 2.00" scavenge
<b>SERIES I SINGLE STAGE 2 SECTION CROSSPORTED NON-REGULATOR PUMPS - FOR CIRCULATION, SCAVENGE OR PRESSURE</b>			
009 92660	524.25	432.51	2 Section .600"
009 92880	524.25	432.51	2 Section .840"
009 92000	524.25	432.51	2 Section 1.00"
009 92110	555.45	458.25	2 Section 1.25"
009 92220	586.65	483.99	2 Section 1.50"
009 92330	617.85	509.73	2 Section 1.75"
009 92440	649.05	535.47	2 Section 2.00"
<b>SERIES I SINGLE STAGE 3 SECTION CROSSPORTED NON-REGULATOR PUMPS - FOR CIRCULATION, SCAVENGE OR PRESSURE</b>			
009 93660	686.90	566.69	3 Section .600"
009 93880	686.90	566.69	3 Section .840"
009 93000	686.90	566.69	3 Section 1.00"
009 93110	718.10	592.43	3 Section 1.25"
009 93220	749.30	618.17	3 Section 1.50"
009 93330	780.50	643.91	3 Section 1.75"
009 93440	811.70	669.65	3 Section 2.00"

PART NO	NET US\$	JOBBER	DESCRIPTION
<b>SERIES 1 COMP SINGLE, TWO &amp; THREE STAGE BELT DRIVEN EXTERNAL WET SUMP TRACTOR PUMPS - MOTORPLATE MOUNT</b>			
007 72300	1276.11	1052.79	2 Stage, 3 Section External Wet Sump Pump with 2 crossported 1.75" engine pressure sections & 1.00" turbo pressure section. Features double seal stage separation, intermediate shaft bearing and 2 integral regulators. Adjustable 4 bolt motor plate mount standard. Other mountings available
007 72310	1276.11	1052.79	2 Stage, 3 Section External Wet Sump Pump with 2 crossported 1.75" engine pressure sections & 1.25" turbo pressure section. Features double seal stage separation, intermediate shaft bearing and 2 integral regulators. Adjustable 4 bolt motor plate mount standard. Other mountings available
007 72400	1276.11	1052.79	2 Stage, 3 Section External Wet Sump Pump with 2 crossported 2.00" engine pressure sections & 1.00" turbo pressure section. Features double seal stage separation, intermediate shaft bearing and 2 integral regulators. Adjustable 4 bolt motor plate mount standard. Other mountings available
007 72410	1276.11	1052.79	2 Stage, 3 Section External Wet Sump Pump with 2 crossported 2.00" engine pressure sections & 1.25" turbo pressure section. Features double seal stage separation, intermediate shaft bearing and 2 integral regulators. Adjustable 4 bolt motor plate mount standard. Other mountings available
007 73300	1618.75	1335.47	3 Stage, 4 Section External Wet Sump Pump with 2 Crossported 1.75" engine pressure sections, 1.00" diesel fuel section with bronze idler, & 1.00" turbo pressure section. Features double seal stage separation, intermediate shaft bearing and 3 regulators, 2 integral and 1 remote. Adjustable 4 bolt motor plate mount standard. Other mountings available.
007 73311	1618.75	1335.47	3 Stage, 4 Section External Wet Sump Pump with 2 Crossported 1.75" engine pressure sections, 1.25" diesel fuel section with bronze idler, & 1.25" turbo pressure section. Features double seal stage separation, intermediate shaft bearing and 3 regulators, 2 integral and 1 remote. Adjustable 4 bolt motor plate mount standard. Other mountings available.
007 73400	1618.75	1335.47	3 Stage, 4 Section External Wet Sump Pump with 2 Crossported 2.00" engine pressure sections, 1.00" diesel fuel section with Teflon coated idler, & 1.00" turbo pressure section. Features double seal stage separation, internal shaft bearing and 2 integral regulators. Requires 1 additional remote regulator for fuel pressure. Adjustable 4 bolt motor plate mount standard. Others available.
007 73411	1618.75	1335.47	3 Stage, 4 Section External Wet Sump Pump with 2 Crossported 2.00" engine pressure sections, 1.25" diesel fuel section with bronze idler, & 1.25" turbo pressure section. Features double seal stage separation, internal shaft bearing and 2 integral regulators. Requires 1 remote regulator for fuel pressure. Adjustable 4 bolt motor plate mount standard. Others available.
<b>SERIES 2 PROLINE OIL PUMPS</b>			
<b>FEATURES: ADDITIONAL SHAFT BEARING, DOWEL ALIGNMENT, ANGLED PORTS, COATED GEARS</b>			
<b>SERIES 2 4 STAGE DRY SUMP PUMPS - BELT OR CAM DRIVE - NON-REGULATOR - REQUIRES SEPARATE REMOTE REGULATOR - SEE BELOW</b>			
002 24110	1201.85	991.53	4 Stage, 1.25" pressure, 1.25" scavenge
002 24120	1256.55	1036.65	4 Stage, 1.25" pressure, 1.50" scavenge
002 24130	1305.75	1077.24	4 Stage, 1.25" pressure, 1.75" scavenge
002 24210	1205.65	994.66	4 Stage, 1.50" pressure, 1.25" scavenge
002 24220	1282.00	1057.65	4 Stage, 1.50" pressure, 1.50" scavenge
002 24230	1342.00	1107.15	4 Stage, 1.50" pressure, 1.75" scavenge
<b>SERIES 2 5 STAGE DRY SUMP PUMPS - BELT OR CAM DRIVE - NON-REGULATOR - REQUIRES SEPARATE REMOTE REGULATOR - SEE BELOW</b>			
002 25000	1432.15	1181.52	5 Stage, 1.00" pressure, 1.00" scavenge
002 25010	1432.15	1181.52	5 Stage, 1.00" pressure, 1.25" scavenge
002 25020	1497.75	1235.64	5 Stage, 1.00" pressure, 1.50" scavenge
002 25030	1583.35	1306.26	5 Stage, 1.00" pressure, 1.75" scavenge
002 25110	1432.15	1181.52	5 Stage, 1.25" pressure, 1.25" scavenge
002 25120	1533.95	1265.51	5 Stage, 1.25" pressure, 1.50" scavenge
002 25130	1619.55	1336.13	5 Stage, 1.25" pressure, 1.75" scavenge
002 25220	1554.00	1282.05	5 Stage, 1.50" pressure, 1.50" scavenge
002 25230	1639.60	1352.67	5 Stage, 1.50" pressure, 1.75" scavenge
<b>SERIES 2 4 STAGE DRY SUMP PUMPS W/FRONT OR REAR INTEGRAL REGULATOR - BELT OR CAM DRIVE</b>			
004 44000	1374.00	1133.55	4 Stage, 1.00" pressure, 1.00" scavenge
004 44010	1374.00	1133.55	4 Stage, 1.00" pressure, 1.25" scavenge
004 44020	1423.20	1174.14	4 Stage, 1.00" pressure, 1.50" scavenge
004 44030	1487.40	1227.11	4 Stage, 1.00" pressure, 1.75" scavenge
004 44100	1374.00	1133.55	4 Stage, 1.25" pressure, 1.00" scavenge
004 44110	1374.00	1133.55	4 Stage, 1.25" pressure, 1.25" scavenge
004 44120	1423.20	1174.14	4 Stage, 1.25" pressure, 1.50" scavenge
004 44130	1487.40	1227.11	4 Stage, 1.25" pressure, 1.75" scavenge
004 44200	1390.40	1147.08	4 Stage, 1.50" pressure, 1.00" scavenge
004 44210	1390.40	1147.08	4 Stage, 1.50" pressure, 1.25" scavenge
004 44220	1439.60	1187.67	4 Stage, 1.50" pressure, 1.50" scavenge
004 44230	1503.80	1240.64	4 Stage, 1.50" pressure, 1.75" scavenge
<b>SERIES 2 5 STAGE DRY SUMP PUMPS W/FRONT OR REAR INTEGRAL REGULATOR - BELT OR CAM DRIVE</b>			
004 45000	1590.00	1311.75	5 Stage, 1.00" pressure, 1.00" scavenge
004 45010	1590.00	1311.75	5 Stage, 1.00" pressure, 1.25" scavenge
004 45020	1655.60	1365.87	5 Stage, 1.00" pressure, 1.50" scavenge
004 45030	1757.60	1450.02	5 Stage, 1.00" pressure, 1.75" scavenge

PART NO	NET US\$	JOBBER	DESCRIPTION
004 45100	1590.00	1311.75	5 Stage, 1.25" pressure, 1.00" scavenge
004 45110	1590.00	1311.75	5 Stage, 1.25" pressure, 1.25" scavenge
004 45120	1655.60	1365.87	5 Stage, 1.25" pressure, 1.50" scavenge
004 45130	1757.60	1450.02	5 Stage, 1.25" pressure, 1.75" scavenge
004 45200	1606.40	1325.28	5 Stage, 1.50" pressure, 1.00" scavenge
004 45210	1606.40	1325.28	5 Stage, 1.50" pressure, 1.25" scavenge
004 45220	1672.00	1379.40	5 Stage, 1.50" pressure, 1.50" scavenge
004 45230	1757.60	1450.02	5 Stage, 1.50" pressure, 1.75" scavenge
<b>SERIES 2 6 STAGE DRY SUMP PUMPS W/FRONT OR REAR INTEGRAL REGULATOR - BELT OR CAM DRIVE</b>			
004 46100	1806.00	1489.95	6 Stage, 1.25" pressure, 1.00" scavenge
004 46110	1806.00	1489.95	6 Stage, 1.25" pressure, 1.25" scavenge
<b>SERIES 2 5 &amp; 6 STAGE ROTOR SCAVENGE DRY SUMP PUMPS W/INTEGRAL REGULATOR - BELT OR CAM DRIVE</b>			
004 45050	1840.00	1518.00	5 Stage, 1.00" pressure, 1.25" Rootes scavenge
004 45060	1905.60	1572.12	5 Stage, 1.00" pressure, 1.50" Rootes scavenge
004 45070	1971.20	1626.24	5 Stage, 1.00" pressure, 1.75" Rootes scavenge
004 45150	1840.00	1518.00	5 Stage, 1.25" pressure, 1.25" Rootes scavenge
004 45160	1905.60	1572.12	5 Stage, 1.25" pressure, 1.50" Rootes scavenge
004 45170	1971.20	1626.24	5 Stage, 1.25" pressure, 1.75" Rootes scavenge
004 46050	2124.00	1752.30	6 Stage, 1.00" pressure, 1.25" Rootes scavenge
004 46060	2221.00	1832.33	6 Stage, 1.00" pressure, 1.50" Rootes scavenge
004 46070	2318.00	1912.35	6 Stage, 1.00" pressure, 1.75" Rootes scavenge
004 46150	2124.00	1752.30	6 Stage, 1.25" pressure, 1.25" Rootes scavenge
004 46160	2221.00	1832.33	6 Stage, 1.25" pressure, 1.50" Rootes scavenge
004 46170	2318.00	1912.35	6 Stage, 1.25" pressure, 1.75" Rootes scavenge
<b>KOOLFLOW REMOTE REGULATORS</b>			
010 19080	98.00	80.85	Remote Regulator with -08 fittings, -10 bypass
010 19100	98.00	80.85	Remote Regulator with -10 fittings, -10 bypass
010 19200	98.00	80.85	Remote Regulator with -12 fittings, -10 bypass
010 40110	149.00	122.93	Remote HP4 style Oil Filter Mount with integral Pressure Regulator, supplied with GM filter nipple
010 40111-12	189.00	155.93	Remote HP6 style Oil Filter Mount with integral Pressure Regulator, HP6 nipple
010 40111-14	189.00	155.93	Remote HP6 style Oil Filter Mount with integral Pressure Regulator, Wix/AC nipple
010 40112	149.00	122.93	SBC/BBC HP4 style Sandwich Oil Cooler Adapter with integral Pressure Regulator
010 19300	14.10	11.63	SBC/BBC Regulator Bypass Kit - steel
010 19350	15.80	13.04	SBC/BBC Regulator Bypass Kit - aluminum
<b>SERIES I COMP PUMP SYSTEM COMPONENT PARTS</b>			
<b>Gear &amp; Housing Sets</b>			
101 30000	123.45	101.85	0.600" Pump Housing & Gear Set
101 30010	124.05	102.34	0.840" Pump Housing & Gear Set
101 30020	124.85	103.00	1.000" Pump Housing & Gear Set
101 30030	126.25	104.16	1.250" Pump Housing & Gear Set
101 30035	179.14	147.79	1.250" Pump Housing & Gear Set - Cast Iron
101 30040	133.05	109.77	1.500" Pump Housing & Gear Set
101 30045	148.05	122.14	1.500" Pump Housing & Gear Set - Cast Iron
101 30050	137.50	113.44	1.750" Pump Housing & Gear Set
101 30055	196.62	162.21	1.750" Pump Housing & Gear Set - Cast Iron
101 30060	140.90	116.24	2.000" Pump Housing & Gear Set
101 30065	205.76	169.75	2.000" Pump Housing & Gear Set - Cast Iron
<b>S1 Pump Housings</b>			
101 30100-00	57.00	47.03	0.600" Pump Housing - 05x05 Ports
101 30110-00	57.00	47.03	0.840" Pump Housing - 06x06 Ports
101 30120-00	57.00	47.03	1.000" Pump Housing - 08x08 Ports
101 30120-02	109.89	90.66	1.000" Pump Housing - Cast Iron - 08x08 Ports
101 30120-03	67.60	55.77	1.000" Pump Housing for diesel fuel application- 08x08 Ports
101 30130-00	57.00	47.03	1.250" Pump Housing - 10x10 Ports
101 30130-01	70.80	58.41	1.250" Pump Housing - 45 D outlet - 10x10 Ports
101 30130-02	109.89	90.66	1.250" Pump Housing - Cast Iron - 10x10 Ports
101 30130-03	67.60	55.77	1.250" Pump Housing for diesel fuel application- 10x10 Ports
101 30130-04	70.80	58.41	1.250" Pump Housing 90D outlet- 10x10 Ports
101 30130-05	70.80	58.41	1.250" Pump Housing - Plate Mounting - 10x10 Ports
101 30130-06	70.80	58.41	1.250" Pump Housing 180D outlet - offset 45D- 10x10 Ports
101 30130-12	59.00	48.68	1.250" Pump Housing - 10x12 Ports
101 30140-00	61.90	51.07	1.500" Pump Housing - 12x12 Ports
101 30140-01	76.90	63.44	1.500" Pump Housing 45 degree outlet - 12x12 Ports
101 30140-02	116.86	96.41	1.500" Pump Housing - Cast Iron - 12x12 Ports
101 30140-04	76.90	63.44	1.500" Pump Housing 90D outlet- 10x10 Ports
101 30140-05	76.90	63.44	1.500" Pump Housing - Plate Mounting - 12x12 Ports
101 30140-06	76.90	63.44	1.500" Pump Housing 180D outlet - offset 45D- 10x10 Ports
101 30150-00	64.70	53.38	1.750" Pump Housing - 12x12 Ports
101 30150-02	123.82	102.15	1.750" Pump Housing - Cast Iron - 12x12 Ports
101 30160-00	66.45	54.82	2.000" Pump Housing - 12x12 Ports

PART NO	NET US\$	JOBBER	DESCRIPTION
101 30160-01	68.35	56.39	2.000" Pump Housing - 12x16 Ports
101 30160-02	131.31	108.33	2.000" Pump Housing - Cast Iron - 12x16 Ports
<b>S1 Gear Sets</b>			
101 30200	66.45	54.82	0.600" Gear Set Steel
101 30210	67.05	55.32	0.840" Gear Set Steel
101 30220	67.85	55.98	1.000" Gear Set Steel
101 30222	73.85	60.93	1.000" Gear Set Steel w/ Teflon Coated Idler
101 30230	69.25	57.13	1.250" Gear Set Steel
101 30232	75.25	62.08	1.250" Gear Set Steel w/ Teflon Coated Idler
101 30240	71.15	58.70	1.500" Gear Set Steel
101 30250	72.80	60.06	1.750" Gear Set Steel
101 30260	74.45	61.42	2.000" Gear Set Steel
101 30265	6.00	4.95	Coat Gear - add
<b>S1 &amp; S2 Drive shafts - specify pump part number</b>			
101 30310	36.10	29.78	Drive Shaft 1 Key Standard
101 30315	56.80	46.86	Drive Shaft 1 Key Special
101 30320	40.75	33.62	Drive Shaft 2 Key Standard
101 30325	61.45	50.70	Drive Shaft 2 Key Special
101 30330	45.40	37.46	Drive Shaft 3 Key Standard
101 30335	66.10	54.53	Drive Shaft 3 Key Special
101 30340	50.05	41.29	Drive Shaft 4 Key Standard
101 30345	70.75	58.37	Drive Shaft 4 Key Special
101 30350	54.70	45.13	Drive Shaft 5 Key Standard
101 30355	75.40	62.21	Drive Shaft 5 Key Special
101 30360	59.35	48.96	Drive Shaft 6 Key Standard
101 30365	80.05	66.04	Drive Shaft 6 Key Special
101 30371	64.00	52.80	Drive Shaft 7 Key Standard
101 30375	84.70	69.88	Drive Shaft 7 Key Special
101 30380	68.65	56.64	Drive Shaft 8 Key Standard
101 30380	89.35	73.71	Drive Shaft 8 Key Special
101 30370	20.70	17.08	For Drive Shaft with Fuel Drive, ADD
<b>S1 &amp; S2 Idler shafts - specify length or pump part number</b>			
101 30381	19.40	16.01	1 Stage Idler Shaft
101 30382	22.90	18.89	2 Stage Idler Shaft
101 30383	26.40	21.78	3 Stage Idler Shaft
101 30384	29.90	24.67	4 Stage Idler Shaft
101 30385	33.40	27.56	5 Stage Idler Shaft
101 30385	36.90	30.44	6 Stage Idler Shaft
<b>S1 &amp; S2 Stud Sets - specify length or pump part number</b>			
101 30391	21.95	18.11	Pump Studs, 1 Stage - set of 4
101 30392	26.95	22.23	Pump Studs, 2 Stage - set of 4
101 30393	31.95	26.36	Pump Studs, 3 Stage - set of 4
101 30394	36.95	30.48	Pump Studs, 4 Stage - set of 4
101 30395	41.95	34.61	Pump Studs, 5 Stage - set of 4
101 30395	46.95	38.73	Pump Studs, 6 Stage - set of 4
<b>S1 &amp; S2 Pump Nuts</b>			
101 30398	2.30	1.90	Stud Nut - Flange
101 30399	2.30	1.90	Stud Nut - Allen
102 30399	2.30	1.90	Stud Nut - 12 Point
<b>S1 Blades, Mounts, Separators</b>			
101 30400-XX	62.50	51.56	.500" Mounting Blade - without Crossport - Specify mount number
101 30401-XX	72.60	59.90	.500" Mounting Blade - with Regulator Porting - Specify mount number
101 30402-XX	68.50	56.51	.500" Mounting Blade - with Bearing - Specify mount number
101 30403-XX	72.60	59.90	.500" Mounting Blade - with Bearing & Crossport - Specify mount number
101 30404-XX	68.50	56.51	.500" Mounting Blade - with Seals - Specify mount number
101 30405-XX	66.50	54.86	.500" Mounting Blade - with Crossport - Specify mount number
101 30470-00	27.65	22.81	.030" Cover Plate for Double Seal or Bearing Plate
101 30470-01	29.85	24.63	.030" Cover Plate with crossport for crossported Bearing Plate
101 30475-00	32.00	26.40	.160" Separator Plate
101 30475-01	36.00	29.70	.160" Separator Plate with Crossport
101 30480-00	34.00	28.05	.250" Separator Plate
101 30480-01	38.00	31.35	.250" Separator Plate with Crossport
101 30485-00	36.00	29.70	.500" Separator Plate
101 30485-01	40.00	33.00	.500" Separator Plate with Crossport
101 30485-02	46.50	38.36	.500" Separator Plate with Bearing
101 30485-03	49.60	40.92	.500" Separator Plate with Bearing & Crossport
101 30485-04	46.50	38.36	.500" Separator Plate with Double Seals
101 30485-05	36.00	29.70	.500" Separator Plate with O-ring 1 side
101 30485-06	40.00	33.00	.500" Separator Plate with Crossport & O-ring 1 side
101 30500-00	65.60	54.12	Pump Front - Standard Belt Drive
101 30500-01	71.60	59.07	Pump Front - Standard Belt Drive W/ O-Ring for "O" position blade

PART NO	NET US\$	JOBBER	DESCRIPTION
101 30500-XX	96.40	79.53	Specialty Gear Drive Pump Front - Cam Drive - Arias, KB, AR Ford, Donovan - Specify mount number
101 30500-XX	80.40	66.33	Standard Scale Pump Front - Motor plate, JFK, KSE, Esslinger, GT - Specify mount number
<b>S1 &amp; S2 Accessory Drives, Cam Hubs &amp; Hardware</b>			
101 30550	127.45	105.15	Fuel Drive Plate, Hilborn 3-bolt plate with seals, hardware, phenolic insulator & drive screw
101 30551	127.45	105.15	Fuel Drive Plate, Enderle 4-bolt plate with seals, hardware, phenolic insulator & drive screw
101 30552	127.45	105.15	Fuel Drive Plate, blank with seals, hardware, phenolic insulator & drive screw
101 30553	95.80	79.04	Power Steering Drive for KSE with seals, hardware & drive screw
101 30554	95.80	79.04	Power Steering Drive for KRC with seals, hardware & drive screw
101 30555	95.80	79.04	Power Steering Drive, Saginaw T/C pump plate with seals, hardware & drive screw
101 30564	37.25	30.73	Drive Hub 1/2" Hex Chevrolet Cam Front
101 30565	50.69	41.82	Drive Hub 1/2" Hex Chevrolet Cam Front Lite
101 30566	160.98	132.81	Drive Hub 7/16" Hex Big Block Chevrolet Cam Front
101 30567	84.92	70.06	Drive Hub 7/16" Hex 417 Donovan Cam Drive Front
101 30568	84.92	70.06	Drive Hub 1/2" Hex 417 Donovan Cam Drive Front
101 30569	93.85	77.43	Drive Hub 7/16" Hex Chevrolet Cam Front
101 30570	17.50	14.44	Phenolic Spacer - Fuel Drive
101 30580	22.60	18.65	5/16" Female Hex Drive Screw LH
101 30582	22.60	18.65	5/16" Female Hex Drive Screw RH
101 30584	31.60	26.07	3/8" Long Female Hex Drive Screw LH
101 30586	31.60	26.07	3/8" Long Female Hex Drive Screw RH
<b>S1 Regulator Assemblies &amp; Components</b>			
101 30600-00	224.00	184.80	Pressure Regulator - Standard Rotation - complete w/bearing
101 30600-01	224.00	184.80	Pressure Regulator - Internal Tractor - Standard Rotation - complete w/bearing
101 30600-03	224.00	184.80	Pressure Regulator - Universal internal
101 30600-05	224.00	184.80	Pressure Regulator - Reverse Rotation - complete w/bearing
101 30600-06	224.00	184.80	Pressure Regulator - Internal Tractor - Reverse Rotation - complete w/bearing
101 30600-07	246.00	202.95	Pressure Regulator - Standard Rotation - Rear mount Filter - complete w/bearing
101 40106	94.50	77.96	HP3/7 Pump filter mount
101 30610-00	63.50	52.39	Pump Back - Non Regulator - complete w/bearing
101 30610-01	76.60	63.20	Pump Back - Non Regulator w/ -10 ports - complete w/bearing
101 30610-02	70.10	57.83	Pump Back - Non Regulator - with O-ring - complete w/bearing
101 30620	17.60	14.52	Rear Bearing Cover with O-ring and screws
101 30630	17.35	14.31	Poppet- Regulator
101 30635	9.85	8.13	Pressure Relief Screw with O-ring and Nut
101 30640-00	2.55	2.10	Spring, Pressure - Regular - 50-90 PSI
101 30640-01	2.55	2.10	Spring, Pressure - Lite - 30-75 PSI
101 30640-02	2.55	2.10	Spring, Pressure - Heavy - 90-300PSI
101 30640-05	7.55	6.23	Spring Set, Lite, Standard & High Pressure
<b>S1 Rebuild Components &amp; Kits</b>			
101 30710	6.50	5.36	Bearing, S1, Sealed 6108, Belt drive front
101 30712	6.00	4.95	Bearing, S1, Sealed R10, Cam drive front
101 30720	5.70	4.70	Bearing, S1, Sealed R8, Rear
101 30730	6.05	4.99	Bearing, Open R10, bearing plate
101 30740	7.10	5.86	Seal, Front
101 30745	4.20	3.47	Seal, Fuel Drive, Separator Plate w/ seals
101 30790	17.60	14.52	Rebuilt Kit - Seal, O-Rings, Set Screws, Snap Ring, Keys
101 30792-01	24.00	19.80	Rebuilt Kit - 1 Stage O ringed pump - Seal, O-Rings, Set Screws, Snap Ring, Keys
101 30792-02	26.50	21.86	Rebuilt Kit - 2 Stage O ringed pump - Seal, O-Rings, Set Screws, Snap Ring, Keys
101 30792-03	29.00	23.93	Rebuilt Kit - 3 Stage O ringed pump - Seal, O-Rings, Set Screws, Snap Ring, Keys
101 30792-04	31.50	25.99	Rebuilt Kit - 4 Stage O ringed pump - Seal, O-Rings, Set Screws, Snap Ring, Keys
101 30792-05	34.00	28.05	Rebuilt Kit - 5 Stage O ringed pump - Seal, O-Rings, Set Screws, Snap Ring, Keys
<b>SERIES 2 PROLINE PUMP SYSTEM COMPONENT PARTS</b>			
<b>S2 Pump Housings</b>			
102 31120-00	80.71	66.59	1.000" Pump Housing Proline
102 31120-01	124.00	102.30	1.000" Pump Housing Proline Cast Iron - 1.000 Gear
102 31120-06	151.60	125.07	1.000" Pump Housing Proline Cast Iron - 0.600 Gear
102 31120-08	151.60	125.07	1.000" Pump Housing Proline Cast Iron - 0.800 Gear
102 31130-00	81.37	67.13	1.250" Pump Housing Proline
102 31130-01	94.25	77.76	1.250" Pump Housing - Plate mounting
102 31130-02	94.25	77.76	1.250" Pump Housing Proline - Trans Am 45 degree outlet port
102 31130-03	94.25	77.76	1.250" Pump Housing Proline - 180 outlet port
102 31130-XX	111.60	92.07	1.250" Pump Mounting Body Proline - Specify Mount Number
102 31130-01	128.60	106.10	1.250" Pump Housing Proline - Cast Iron
102 31140-00	83.74	69.09	1.500" Pump Housing Proline
102 31140-01	98.25	81.06	1.500" Pump Housing Proline - Plate Mounting
102 31140-03	98.25	81.06	1.500" Pump Housing Proline - GM BGN/WC 180 degree outlet port orientation
102 31140-XX	116.60	96.20	1.500" Pump Mounting Body Proline - specify mount number
102 31140-01	136.00	112.20	1.500" Pump Housing Proline - Cast Iron
102 31150-00	87.78	72.42	1.750" Pump Housing Proline

PART NO	NET US\$	JOBBER	DESCRIPTION
<b>S2 0.600 &amp; 0.800 Pressure Sections Gear Sets - Others use Standard S1 Gears</b>			
102 30201-0600	66.82	55.13	0.600" HD Gear Set Steel
102 30201-0800	66.82	55.13	0.800" HD Gear Set Steel
<b>S2 High Displacement Teflon Coated Scavenge Gear Sets</b>			
102 31201-1000	66.82	55.13	1.000" HD Gear Set Steel
102 31201-1250	72.82	60.08	1.250" HD Gear Set Steel
102 31201-1500	78.82	65.03	1.500" HD Gear Set Steel
102 31201-1750	84.82	69.98	1.750" HD Gear Set Steel
<b>S2 Extreme Displacement Scavenge Rotor Sets</b>			
102 31202-1250	146.24	120.65	1.250" 2 Lobe Rotor Set Aluminum
102 31202-1500	146.24	120.65	1.500" 2 Lobe Rotor Set Aluminum
102 31211-01	35.00	28.88	Double Rotor Drive Gear
102 31211-02	35.00	28.88	Single Rotor Drive Gear
<b>S2 Blades, Mounts, Separators</b>			
102 31402-XX	75.88	62.60	.375" Mounting Blade Proline - with bearing & Crossport - Specify mount number
102 31401-XX	72.88	60.13	.375" Mounting Blade Proline - with Crossport - Specify mount number
102 31404-XX	72.88	60.13	.375" Mounting Blade Proline - with O-ring for "0" position mount - Specify mount number
102 31403-XX	78.88	65.08	.500" Mounting Blade Proline - with Bearing & Crossport - Specify mount number
102 31400-XX	72.88	60.13	.500" Mounting Blade Proline - without Crossport - Specify mount number
102 31470-01	23.40	19.31	.030" Separator Plate Proline
102 31472-01	26.40	21.78	.030" Separator Plate Proline with crossport
102 31470-02	37.75	31.14	.125" Separator Plate Proline
102 31472-02	40.75	33.62	.125" Separator Plate Proline with crossport
102 31470-03	40.15	33.12	.250" Separator Plate Proline
102 31472-03	43.15	35.60	.250" Separator Plate Proline with crossport
102 31471-04	75.65	62.41	.375" Separator Plate Proline with Bearing
102 31473-04	78.65	64.89	.375" Separator Plate Proline with Bearing and Crossport
102 31471-05	75.65	62.41	.500" Separator Plate Proline with Bearing
102 31473-05	78.65	64.89	.500" Separator Plate Proline with Bearing and Crossport
102 31500-XX	86.90	71.69	Pump Front Single Bearing - Belt Drive - Specify Mount Number
102 31501-XX	86.90	71.69	Pump Front Double Bearing - Belt Drive - Specify Mount Number
102 31505-37	106.50	87.86	Pump Front Proline - Cam Drive - Sprint Car
<b>S2 Regulator Assemblies &amp; Components</b>			
102 31600-00	256.00	211.20	Pressure Regulator Proline - Standard Rotation - Left Side Mount
102 31600-01	256.00	211.20	Pressure Regulator Proline - Standard Rotation - Right Side Mount
102 31600-02	256.00	211.20	Pressure Regulator Proline - Reverse Rotation - Left Side Mount
102 31600-03	256.00	211.20	Pressure Regulator Proline - Reverse Rotation - Right Side Mount
102 31600-05	284.00	234.30	Pressure Regulator Proline - Standard Rotation - Right Side Mount - Front Pressure Section
102 31600-06	256.00	211.20	Pressure Regulator Proline - Reverse Rotation - KSE Cam Mount
102 31600-07	284.00	234.30	Pressure Regulator Proline - Reverse Rotation - KSE Cam Mount - Front Pressure Section
102 31610-00	90.75	74.87	Pump Back Proline - Non Regulator - Left Side Mount - For Accessory Mountings
102 31610-01	90.75	74.87	Pump Back Proline - Non Regulator - Left Side Mount
102 31611-00	90.75	74.87	Pump Back Proline - Non Regulator - Right Side Mount - For Accessory Mountings
102 31611-01	90.75	74.87	Pump Back Proline - Non Regulator - Right Side Mount
<b>S2 Rebuild Components &amp; Kits</b>			
102 31710	6.05	4.99	Bearing, R10 Open, Proline Front, Bearing Blade/Plate
102 31720	5.50	4.54	Bearing, R8 Open, Proline Rear
102 31700	16.50	13.61	Bearing Kit - Proline Standard Pump
102 31740	7.75	6.39	Seal, Front Proline Viton
102 31750-250	4.60	3.80	Dowel Sleeve .250
102 31750-350	4.60	3.80	Dowel Sleeve .350
102 31750-450	4.60	3.80	Dowel Sleeve .450
102 31750-625	4.60	3.80	Dowel Sleeve .625
102 31750-750	4.60	3.80	Dowel Sleeve .750
102 31750-875	4.60	3.80	Dowel Sleeve .875
102 31752-0625	0.22	0.18	Dowel Pin 0.625
102 31752-1250	0.29	0.24	Dowel Pin 1.250
102 31760	1.26	1.04	Nut 12 Point S2 Pump
102 31761	6.84	5.64	7/16 x 3/8 Flange Bushing
102 31790-24	24.50	20.21	Rebuilt Kit Proline - 4 Stage Pump - Viton Seal, O-Rings, Set Screws, Snap Ring, Keys
102 31790-25	30.50	25.16	Rebuilt Kit Proline - 5 Stage Pump - Viton Seal, O-Rings, Set Screws, Snap Ring, Keys
102 31790-26	36.50	30.11	Rebuilt Kit Proline - 6 Stage Pump - Viton Seal, O-Rings, Set Screws, Snap Ring, Keys

PART NO	NET US\$	JOBBER	DESCRIPTION
<b>OIL SYSTEM ACCESSORIES</b>			
<b>S1 Pump Mounting Adapters</b>			
104 40010	39.50	32.59	Chevrolet Small Block External Pump Riser Plate Left Side Mount Pump
104 40011	75.00	61.88	Ford Small Block External Pump Adapter for Right Side Mount Pump
104 40012-01	74.60	61.55	426 Hemi Pump Adapter Standard Position
104 40012-02	74.60	61.55	426 Hemi Pump Adapter Belt Drive Side Bolt Pump
104 40013-00	149.50	123.34	427 FE External Pump Adapter for Right Side Mount Pump
104 40013-01	149.50	123.34	427 FE steel damper sleeve w/Gilmer drive gear & permanent guides
104 40013-02	149.50	123.34	427 FE steel damper sleeve w/HTD drive gear & permanent guides
104 40014	48.00	39.60	Chrysler Small Block External Pump Adapter for Left Side Mount Pump
104 40018	90.00	74.25	Pump Adapter LS1 RSM S2
104 40018-2	84.00	69.30	Pump Adapter LS1 RSM S2
104 40018-4	67.50	55.69	Pump Adapter LS1 S2 2BL
104 40076-00	62.00	51.15	Pump Adapter Generic Side Bolt Mount Pump
104 40076-12	84.00	69.30	Pump Adapter GMC I6 RSM
104 40076-14	72.00	59.40	Pump Adapter Honda VTEC
104 40076-14-1	7.80	6.44	Pump Adapter Side Bolt Pump Mount Hardware Kit
104 40076-15	38.00	31.35	Pump Adapter 2300F LSM.
104 40076-16	39.75	32.79	Pump Adapter 2300F RSM.
104 40076-17	42.00	34.65	Pump Adapter Modular Ford Side Bolt Mount Pump
104 40082	36.00	29.70	Pump Adapter LS1 DIRECT
104 59411	84.00	69.30	Pump Adapter ZETEC Oil Pan Mount
104 40017-1	2.24	1.85	Shim 76 Mount Long
104 40017-2	1.94	1.60	Shim 76 Mount Short
<b>In-Line Scavenge Filters</b>			
104 40020-08	48.80	40.26	In-Line Scavenge Filter- 1.25" Diameter -08 Fittings
104 40020-10	48.80	40.26	In-Line Scavenge Filter -1.25" Diameter -10 Fittings
104 40020-12	48.80	40.26	In-Line Scavenge Filter- 1.25" Diameter -12 Fittings
104 40020-16	59.50	49.09	In-Line Scavenge Filter- 1.50" Diameter -16 Fittings
104 40021-12	72.89	60.13	In-Line Scavenge Filter -12 x -12x90 Degree Fittings
104 40025-60	12.60	10.40	Replacement Filter Screen -12
104 40025-80	16.20	13.37	Replacement Filter Screen -16
<b>Setrab Stack Oil Coolers</b>			
<b>Setrab Oil Cooler Adapter Fittings - All coolers delivered with 22MM Female ports</b>			
121 22-M22AN04-S	8.00	6.60	Setrab M22-AN04 straight adapter
121 22-M22AN06-S	8.00	6.60	Setrab M22-AN06 straight adapter
121 22-M22AN08-S	8.00	6.60	Setrab M22-AN08 straight adapter
121 22-M22AN10-S	8.00	6.60	Setrab M22-AN10 straight adapter
121 22-M22AN12-S	8.00	6.60	Setrab M22-AN12 straight adapter
121 22-M22AN16-S	10.00	8.25	Setrab M22-AN16 straight adapter
121 22-M22AN06-d	26.50	21.86	Setrab M22-AN06 d-swivel 45 degree adapter
121 22-M22AN08-d	30.50	25.16	Setrab M22-AN08 d-swivel 45 degree adapter
121 22-M22AN10-d	33.50	27.64	Setrab M22-AN10 d-swivel 45 degree adapter
121 22-M22AN12-d	38.50	31.76	Setrab M22-AN12 d-swivel 45 degree adapter
121 22-M22AN06-90	26.50	21.86	Setrab M22-AN06 d-swivel 90 degree adapter
121 22-M22AN08-90	30.50	25.16	Setrab M22-AN08 d-swivel 90 degree adapter
121 22-M22AN10-90	33.50	27.64	Setrab M22-AN10 d-swivel 90 degree adapter
121 22-M22AN12-90	38.50	31.76	Setrab M22-AN12 d-swivel 90 degree adapter
121 22-M22PL06-0	9.00	7.43	Setrab M22-06 pushlock straight adapter
121 22-M22PL08-0	11.00	9.08	Setrab M22-08 pushlock straight adapter
121 22-M22PL10-0	12.00	9.90	Setrab M22-10 pushlock straight adapter
121 22-M22PL12-0	13.00	10.73	Setrab M22-12 pushlock straight adapter
121 22-M22PL06-45	24.00	19.80	Setrab M22-06 pushlock 45 degree adapter
121 22-M22PL08-45	27.50	22.69	Setrab M22-08 pushlock 45 degree adapter
121 22-M22PL10-45	30.00	24.75	Setrab M22-10 pushlock 45 degree adapter
121 22-M22PL12-45	35.00	28.88	Setrab M22-12 pushlock 45 degree adapter
121 22-M22PL06-90	24.00	19.80	Setrab M22-06 pushlock 90 degree adapter
121 22-M22PL08-90	27.50	22.69	Setrab M22-08 pushlock 90 degree adapter
121 22-M22PL10-90	30.00	24.75	Setrab M22-10 pushlock 90 degree adapter
121 22-M22PL12-90	35.00	28.88	Setrab M22-12 pushlock 90 degree adapter
121 22-M22RU06-0	15.00	12.38	Setrab M22-06 reusable straight adapter
121 22-M22RU08-0	16.00	13.20	Setrab M22-08 reusable straight adapter
121 22-M22RU10-0	17.50	14.44	Setrab M22-10 reusable straight adapter
121 22-M22RU12-0	20.00	16.50	Setrab M22-12 reusable straight adapter



PART NO	NET US\$	JOBBER	DESCRIPTION
121 22-M22RU06-4	26.00	21.45	Setrab M22-06 reusable 45 degree adapter
121 22-M22RU08-4	29.50	24.34	Setrab M22-08 reusable 45 degree adapter
121 22-M22RU10-4	32.50	26.81	Setrab M22-10 reusable 45 degree adapter
121 22-M22RU12-4	38.00	31.35	Setrab M22-12 reusable 45 degree adapter
121 22-M22RU06-9	26.00	21.45	Setrab M22-06 reusable 90 degree adapter
121 22-M22RU08-9	29.50	24.34	Setrab M22-08 reusable 90 degree adapter
121 22-M22RU10-9	32.50	26.81	Setrab M22-10 reusable 90 degree adapter
121 22-M22RU12-9	38.00	31.35	Setrab M22-12 reusable 90 degree adapter
<b>Setrab Top Port Series 1 Coolers - 8-1/4" OA Length, 6-1/2" Cooler Section</b>			
121 107M22I	96.00	79.20	Setrab series 1, 7 row oil cooler, M22 ports
121 110M22I	106.00	87.45	Setrab series 1, 10 row oil cooler, M22 ports
121 113M22I	124.00	102.30	Setrab series 1, 13 row oil cooler, M22 ports
121 116M22I	152.00	125.40	Setrab series 1, 16 row oil cooler, M22 ports
121 119M22I	168.00	138.60	Setrab series 1, 19 row oil cooler, M22 ports
121 125M22I	204.00	168.30	Setrab series 1, 25 row oil cooler, M22 ports
121 150M22I	446.00	367.95	Setrab series 1, 50 row oil cooler, M22 ports
121 172M22I	604.00	498.30	Setrab series 1, 72 row oil cooler, M22 ports
<b>Setrab Top Port Series 4 Coolers - 9" OA Length, 7-1/4" Cooler Section</b>			
121 432M22I	308.00	254.10	Setrab series 4, 32 row oil cooler, M22 ports
<b>Setrab Top Port Series 6 Coolers - 13" OA Length, 11-1/4" Cooler Section</b>			
121 607M22I	118.00	97.35	Setrab series 6, 7 row oil cooler, M22 ports
121 610M22I	136.00	112.20	Setrab series 6, 10 row oil cooler, M22 ports
121 613M22I	154.00	127.05	Setrab series 6, 13 row oil cooler, M22 ports
121 613AN16	154.00	127.05	Setrab series 6, 13 row oil cooler, AN16 ports
121 616M22I	178.00	146.85	Setrab series 6, 16 row oil cooler, M22 ports
121 616AN16	178.00	146.85	Setrab series 6, 16 row oil cooler, AN16 ports
121 619M22I	198.00	163.35	Setrab series 6, 19 row oil cooler, M22 ports
121 619AN16	198.00	163.35	Setrab series 6, 19 row oil cooler, AN16 ports
121 625M22I	248.00	204.60	Setrab series 6, 25 row oil cooler, M22 ports
121 625AN16	248.00	204.60	Setrab series 6, 25 row oil cooler, AN16 ports
121 634M22I	350.00	288.75	Setrab series 6, 34 row oil cooler, M22 ports
121 634AN16	350.00	288.75	Setrab series 6, 34 row oil cooler, AN16 ports
121 640M22I	398.00	328.35	Setrab series 6, 40 row oil cooler, M22 ports
121 640AN16	398.00	328.35	Setrab series 6, 40 row oil cooler, AN16 ports
121 650M22I	492.00	405.90	Setrab series 6, 50 row oil cooler, M22 ports
121 650AN16	492.00	405.90	Setrab series 6, 50 row oil cooler, AN16 ports
121 660M22I	598.00	493.35	Setrab series 6, 60 row oil cooler, M22 ports
121 660AN16	598.00	493.35	Setrab series 6, 60 row oil cooler, AN16 ports
<b>Setrab Top Port Series 9 Coolers - 16" OA Length, 14-1/2" Cooler Section</b>			
121 910M22I	142.00	117.15	Setrab series 9, 10 row oil cooler, M22 ports
121 915M22I	190.00	156.75	Setrab series 9, 15 row oil cooler, M22 ports
121 920M22I	230.00	189.75	Setrab series 9, 20 row oil cooler, M22 ports
121 925M22I	288.00	237.60	Setrab series 9, 25 row oil cooler, M22 ports
<b>Setrab Multi Pass &amp; Diagonal Flow Coolers - Ports on opposite ends</b>			
121 172M22I-D	604.00	498.30	Setrab series 1, 72 row diagonal flow, M22 ports
121 272M22I-D	718.00	592.35	Setrab series 2, 72 row diagonal flow, M22 ports
121 619M22I-2P	198.00	163.35	Setrab series 6, 19 row, two-pass, M22 ports
121 640M22I-D	398.00	328.35	Setrab series 6, 40 row diagonal flow, M22 ports
121 650M22I-3P	492.00	405.90	Setrab series 6, 50 row, three-pass, M22 ports
121 920M22I-2P	230.00	189.75	Setrab series 9, 20 row two-pass, M22 ports
121 COM500-15NP	604.00	498.30	Setrab COMD, 500mm hdr-hdr, 15 row, NPT3/4
<b>Setrab Coolers w/ Integral Fans</b>			
121 FP119M22I	288.00	237.60	Setrab series 1, 19 row with 12 volt fan
121 FPK119	120.00	99.00	Setrab fan kit, shroud and fan for 119 coolers
121 FP432M22I	700.00	577.50	Setrab series 4, 32 row with 12 volt fan
121 FP640M22I	824.00	679.80	Setrab series 6, 40 row with 12 volt fan
121 FP920M22I	458.00	377.85	Setrab series 9, 20 row with dual 12 volt fans
121 FP920M22I-2P	458.00	377.85	Setrab series 9, 20 row 2-pass cooler w/dual fans
121 FPK920	228.00	188.10	Setrab fan kit, shroud and fans for 920 coolers
121 119 FAN	76.00	62.70	Spal 30100291 12 volt fan only
<b>Setrab Oil to Water Intercoolers</b>			
121 TOC-150M22I	360.00	297.00	Setrab water-to-oil tubular heat exchanger
121 TOC-200M22I	380.00	313.50	Setrab water-to-oil tubular heat exchanger
121 TOC-300M22I	400.00	330.00	Setrab water-to-oil tubular heat exchanger

PART NO	NET US\$	JOBBER	DESCRIPTION
<b>Setrab Accessories</b>			
121 20-042368	0.50	0.41	Setrab Assembly Lubricant0
121 20-2035178			Setrab ProLine O-ring
121 20.35x1.78	2.50	2.06	Nitrile 10-pack
121 22-TS180-06	32.00	26.40	Setrab AN6 in-line T-switch 180oF
121 22-TS180-08	32.00	26.40	Setrab AN8 in-line T-switch 180oF
121 22-TS180-10	32.00	26.40	Setrab AN10 in-line T-switch 180oF
121 23-1002	34.00	28.05	Setrab 1 series mounting bracket set
121 23-6002	39.50	32.59	Setrab 6 series mounting bracket set
121 23-9002	45.50	37.54	Setrab 9 series mounting bracket set
<b>Oil Filter Mounts and Accessories</b>			
104 40100	10.25	8.46	SBC/BBC Oil Pump Block Off Plate with Hardware
104 40101	30.15	24.87	SBC/BBC Oil Filter Block Off with Hardware
104 40102	54.55	45.00	SBC/BBC Remote Oil Filter Block Adapter
104 40103	99.50	82.09	TRACO Cast Aluminum Remote Oil Filter Mount for HP-4
104 40104	149.50	123.34	TRACO SBC/BBC Cast Aluminum Remote Oil Filter Block Adaptor
104 40105	124.50	102.71	SBF Billet Aluminum Remote Oil Filter Block Adapter
104 40107	19.50	16.09	Traco In&Out O-ring Kit
104 40108	99.50	82.09	FE Ford Billet Aluminum Remote Oil Filter Block Adapter
<b>Oil Filters</b>			
104 50010	18.00	14.85	3" Dia Filter Racing Fram HP10 3/4-16 thread - 4-7/8" Tall
104 50007	18.00	14.85	3" Dia Filter Racing Fram HP7 3/4-16 thread - 3-5/16" Tall
104 50001	13.47	11.11	3-5/8" Dia Filter Racing Fram HP1 3/4-16 thread - 5-3/4" Tall
104 50002	18.00	14.85	3-5/8" Dia Filter Racing Fram HP3 13/16-16 thread - 5-3/4" Tall
104 50003	18.00	14.85	3-5/8" Dia Filter Racing Fram HP3 3/4-16 thread - 4" Tall
104 50004	24.00	19.80	3-5/8" Dia Filter Racing Fram HP4 13/16-16 thread - 5-3/4" Tall
104 50012	24.00	19.80	3-5/8" Dia Filter Racing Fram HP4 13/16-16 thread - 8-3/4" Tall
104 50005	24.00	19.80	3-5/8" Dia Filter Racing Fram HP5 13/16-16 thread - 4" Tall
104 50008	18.00	14.85	3-5/8" Dia Filter Racing Fram HP8 13/16-16 thread - 4" Tall
104 50006	24.00	19.80	4-1/2" Dia Filter Racing Fram HP6 1 1/2-12 thread - 6-1/8" Tall
104 51222	28.35	23.39	4-1/2" Dia Filter Racing Wix 1 1/2-12 thread - 6-1/8" Tall
104 57007	28.35	23.39	4-1/2" Dia Filter Racing Wix 1 1/2-16 thread - 6-1/8" Tall
104 51742	12.27	10.12	4-1/2" Dia Filter Standard Wix 1 1/2-16 thread - 6-1/8" Tall
<b>Pump Drive Mandrels</b>			
104 40410	37.10	30.61	Drive Mandrel - SBC
104 40412	47.50	39.19	Blower hub 1" drive mandrel
104 40430	50.19	41.41	Blower crank hub
104 10201	116.51	96.12	Drive Mandrel BBC 3 bolt 1" 3.375" Mandrel length
104 30414	72.00	59.40	Drive Mandrel BBC 3 bolt .625 long - Pin Drive
104 40408	48.00	39.60	Drive Mandrel SBC 2"
104 40409	42.00	34.65	Drive Mandrel SBC 1X3.
104 40410	54.50	44.96	Drive Mandrel SBC 1X4.
104 40411	127.60	105.27	Drive Mandrel EEI 1X4.
104 40413	37.10	30.61	Drive Mandrel 2300 Ford
104 40416	56.00	46.20	Drive Mandrel Suzuki Hyabusa 1"
104 40417	90.00	74.25	Drive Mandrel 4.6/5.4 Modular Ford OEM Damper
104 40418	69.00	56.93	Drive Mandrel 46 Modular 1"
104 40420	42.25	34.86	Drive Mandrel BBC 1X4 - Original double Damper Pin Drive
104 40421	72.00	59.40	Drive Mandrel Modular V8 ATI Damper
104 40422	124.00	102.30	Drive Mandrel BBF 4 Bolt Pin Drive
104 40453-2	8.60	7.10	Bolt Kit ATI 3" Mandrel
104 40018-1	9.00	7.43	Bolt Kit LS1 Mount
104 40018-82-1	6.40	5.28	Bolt Kit LS1 Mount #82..
104 40018-3	4.80	3.96	Bolt Kit MOD V8 Pump Mount
104 40076-1	7.20	5.94	Bolt Kit Side Mount Pump
104 40453	6.10	5.03	1" Mandrel Bolt/Washer
104 40452	6.06	5.00	1" Drive Mandrel Spacer 1"
104 40557	5.25	4.33	1" Drive Mandrel Spacer 1/4"
104 40556	5.63	4.64	1" Drive Mandrel Spacer 1/2"
104 40451	5.40	4.46	Guide Washer 2 3/4"D
104 40450	4.60	3.80	Guide Washer 2-1/4"D
104 40554	24.00	19.80	Mandrel Hat Washer 1" Mandrel Hex
104 40555	18.00	14.85	Mandrel Hat Washer 1" Mandrel Inverted

PART NO	NET US\$	JOBBER	DESCRIPTION
<b>Remote Oil Filter Adapters</b>			
104 40105-12-10.	97.50	80.44	Remote Filter Adapter Swivel 3/4-12 thread Ford -10
104 40105-12-12.	97.50	80.44	Remote Filter Adapter Swivel 3/4-12 thread Ford -12
104 40105-13-10.	97.50	80.44	Remote Filter Adapter Swivel 13/16-12 thread GM Inner Gasket -10
104 40105-13-12.	97.50	80.44	Remote Filter Adapter Swivel 13/16-12 thread GM Inner Gasket -12
104 40105-20-10.	97.50	80.44	Remote Filter Adapter Swivel 20MM Inner Gasket-10
104 40105-20-12	97.50	80.44	Remote Filter Adapter Swivel 20MM Inner Gasket-12
104 40105-22-10.	97.50	80.44	Remote Filter Adapter Swivel 22MM Inner Gasket -10
104 40105-22-12.	97.50	80.44	Remote Filter Adapter Swivel 22MM Inner Gasket -12
104 40709-02	91.50	75.49	SBC Sandwich Remote Cooler Adapter
104 40102	54.55	45.00	SBC/BBC Remote Oil Filter Adapter
104 40100	10.28	8.48	SBC/BBC Oil Pump Block Off Plate
<b>LS A System Gilmer Belt Pump Pulleys</b>			
104 40705-14	102.00	84.15	LS Idler pulley w/ 14 tooth Gilmer Pulley
104 40604-01	49.00	40.43	LS A system pump pulley Locking Collar
104 40605-46	99.00	81.68	LS A system pump pulley
<b>Gilmer Belt Pump Pulleys</b>			
104 40600-26	42.00	34.65	26 Tooth 1" Pump Pulley - 5/8" Shaft
104 40600-28	45.00	37.13	28 Tooth 1" Pump Pulley - 5/8" Shaft
104 40600-30	48.00	39.60	30 Tooth 1" Pump Pulley - 5/8" Shaft
104 40600-32	54.00	44.55	32 Tooth 1" Pump Pulley - 5/8" Shaft
104 40601-26	78.50	64.76	26 Tooth 1 1/2" Pump Pulley - 5/8" Shaft
104 40601-28	42.50	35.06	28 Tooth 1 1/2" Pump Pulley - 5/8" Shaft
104 40601-30	56.25	46.41	30 Tooth 1 1/2" Pump Pulley - 5/8" Shaft
104 40601-32	58.50	48.26	32 Tooth 1 1/2" Pump Pulley - 5/8" Shaft
104 40602-28	63.75	52.59	28 Tooth 1 1/2" Pump Pulley - 5/8" Shaft - Lite Weight
104 40603-23	42.50	35.06	28 Tooth Pulley Guard Set
104 40603-32	42.50	35.06	32 Tooth Pulley Guard Set
104 40604-28	88.32	72.86	28 Tooth Water Pump Pulley
104 40604-32	90.00	74.25	32 Tooth Water Pump pulley
<b>Gilmer Belt Crank Pulleys</b>			
104 40700-12	40.08	33.06	12 Tooth 1" Drive Pulley 1" Mandrel
104 40700-13	40.97	33.80	13 Tooth 1" Drive Pulley 1" Mandrel
104 40700-14	41.86	34.54	14 Tooth 1" Drive Pulley 1" Mandrel
104 40700-15	42.76	35.27	15 Tooth 1" Drive Pulley 1" Mandrel
104 40700-16	43.65	36.01	16 Tooth 1" Drive Pulley 1" Mandrel
104 40700-17	44.54	36.75	17 Tooth 1" Drive Pulley 1" Mandrel
104 40700-18	45.42	37.47	18 Tooth 1" Drive Pulley 1" Mandrel
104 40700-19	46.33	38.22	19 Tooth 1" Drive Pulley 1" Mandrel
104 40700-20	47.22	38.95	20 Tooth 1" Drive Pulley 1" Mandrel
104 40700-21	48.11	39.69	21 Tooth 1" Drive Pulley 1" Mandrel
104 40700-22	49.00	40.43	22 Tooth 1" Drive Pulley 1" Mandrel
104 40700-23	49.90	41.16	23 Tooth 1" Drive Pulley 1" Mandrel
104 40700-24	50.79	41.90	24 Tooth 1" Drive Pulley 1" Mandrel
104 40700-25	51.68	42.64	25 Tooth 1" Drive Pulley 1" Mandrel
104 40700-26	52.57	43.37	26 Tooth 1" Drive Pulley 1" Mandrel
104 40700-27	53.47	44.11	27 Tooth 1" Drive Pulley 1" Mandrel
<b>Gilmer Belts 3/8" Pitch 1" Wide</b>			
104 40800-124	20.30	16.75	124L 100 Belt
104 40800-135	21.62	17.84	135L 100 Belt
104 40800-150	22.54	18.60	150L 100 Belt
104 40800-165	24.02	19.82	165L 100 Belt
104 40800-187	24.98	20.61	187L 100 Belt
104 40800-195	26.50	21.86	195L 100 Belt
104 40800-210	27.26	22.49	210L 100 Belt
104 40800-225	28.04	23.13	225L 100 Belt
104 40800-240	29.26	24.14	240L 100 Belt
104 40800-255	30.46	25.13	255L 100 Belt
104 40800-270	31.92	26.33	270L 100 Belt
104 40800-285	32.72	26.99	285L 100 Belt
104 40800-300	34.28	28.28	300L 100 Belt
104 40800-315	36.10	29.78	315L 100 Belt
104 40800-322	35.90	29.62	322L 100 Belt
104 40800-345	37.38	30.84	345L 100 Belt

PART NO	NET US\$	JOBBER	DESCRIPTION
<b>HTD Belts 8MM Pitch 20MM (.800") or 30MM (1.200") Wide</b>			
104 46450-480	20.67	17.05	Belt 480-8X20 HTD
104 46450-512	21.36	17.62	Belt 512-8x20 HTD
104 46450-560	21.95	18.11	Belt 520-8x20 HTD
104 46450-560	22.95	18.93	Belt 560-8x20 HTD
104 46450-576	23.95	19.76	Belt 576-8x20 HTD
104 46450-592	24.95	20.58	Belt 592-8x20 HTD
104 46450-600	25.95	21.41	Belt 600-8X20 HTD
104 46450-608	26.95	22.23	Belt 608-8X20 HTD
104 46450-624	27.95	23.06	Belt 624-8X20 HTD
104 46450-640	28.95	23.88	Belt 640-8X20 HTD
104 46450-656	29.95	24.71	Belt 656-8X20 HTD
104 46450-672	30.95	25.53	Belt 672-8X20 HTD
104 46450-680	31.95	26.36	Belt 680-8X20 HTD
104 46450-720	32.95	27.18	Belt 720-8X20 HTD
104 46450-760	33.95	28.01	Belt 760-8X20 HTD
104 46450-776	34.95	28.83	Belt 776-8X20 HTD
104 46450-800	35.95	29.66	Belt 800-8X20 HTD
104 46450-840	36.95	30.48	Belt 840-8X20 HTD
104 46450-880	37.95	31.31	Belt 880-8X20 HTD
104 46450-888	38.95	32.13	Belt 888-8X20 HTD
104 46460-600	31.95	26.36	Belt 600-8X30 HTD
104 46460-640	33.95	28.01	Belt 640-8X30 HTD
104 46460-800	37.95	31.31	Belt 800-8X30 HTD
<b>HTD Belt Crank Pulleys - 1" Mandrel w/ 1/8" Keyway</b>			
104 46100-17	53.90	44.47	17 Tooth 1" Drive Pulley 1" Mandrel
104 46100-18	54.90	45.29	18 Tooth 1" Drive Pulley 1" Mandrel
104 46100-19	55.90	46.12	19 Tooth 1" Drive Pulley 1" Mandrel
104 46100-20	56.90	46.94	20 Tooth 1" Drive Pulley 1" Mandrel
104 46100-21	57.90	47.77	21 Tooth 1" Drive Pulley 1" Mandrel
104 46100-22	58.90	48.59	22 Tooth 1" Drive Pulley 1" Mandrel
104 46100-23	59.90	49.42	23 Tooth 1" Drive Pulley 1" Mandrel
104 46100-24	60.90	50.24	24 Tooth 1" Drive Pulley 1" Mandrel
104 46100-25	61.90	51.07	25 Tooth 1" Drive Pulley 1" Mandrel
104 46100-26	62.90	51.89	26 Tooth 1" Drive Pulley 1" Mandrel
104 46100-27	63.90	52.72	27 Tooth 1" Drive Pulley 1" Mandrel
104 46100-28	64.90	53.54	28 Tooth 1" Drive Pulley 1" Mandrel
104 46100-29	65.90	54.37	29 Tooth 1" Drive Pulley 1" Mandrel
104 46100-30	66.90	55.19	30 Tooth 1" Drive Pulley 1" Mandrel
104 46100-31	67.90	56.02	31 Tooth 1" Drive Pulley 1" Mandrel
104 46100-32	68.90	56.84	32 Tooth 1" Drive Pulley 1" Mandrel
104 46100-33	69.90	57.67	33 Tooth 1" Drive Pulley 1" Mandrel
104 46100-34	37.90	31.27	34 Tooth 1" Drive Pulley 1" Mandrel
<b>HTD Oil Pump Belt Pulleys - 5/8" Bore w/ 3/16" Keyway and Set Screws</b>			
104 46101-28	65.00	53.62	28 Tooth 1-1/4" Wide HTD Pump Pulley - 5/8" Shaft
104 46101-30	67.10	55.35	30 Tooth 1-1/4" Wide HTD Pump Pulley - 5/8" Shaft
104 46101-32	69.20	57.09	32 Tooth 1-1/4" Wide HTD Pump Pulley - 5/8" Shaft
104 46101-33	71.30	58.82	33 Tooth 1-1/4" Wide HTD Pump Pulley - 5/8" Shaft
104 46101-34	72.35	59.68	34 Tooth 1-1/4" Wide HTD Pump Pulley - 5/8" Shaft
104 46101-35	74.45	61.42	35 Tooth 1-1/4" Wide HTD Pump Pulley - 5/8" Shaft
104 46101-36	75.50	62.28	36 Tooth 1-1/4" Wide HTD Pump Pulley - 5/8" Shaft
104 46101-37	76.55	63.15	37 Tooth 1-1/4" Wide HTD Pump Pulley - 5/8" Shaft
104 46101-38	78.65	64.88	38 Tooth 1-1/4" Wide HTD Pump Pulley - 5/8" Shaft
104 46101-40	81.80	67.48	40 Tooth 1-1/4" Wide HTD Pump Pulley - 5/8" Shaft
104 46101-45	87.05	71.81	45 Tooth 1-1/4" Wide HTD Pump Pulley - 5/8" Shaft
104 46101-46	89.15	73.54	46 Tooth 1-1/4" Wide HTD Pump Pulley - 5/8" Shaft
104 46101-47	91.25	75.28	47 Tooth 1-1/4" Wide HTD Pump Pulley - 5/8" Shaft
104 46101-48	93.35	77.01	48 Tooth 1-1/4" Wide HTD Pump Pulley - 5/8" Shaft
104 46102-40	76.55	63.15	40 Tooth 1" HTD Pump Pulley - 5/8" Shaft
104 46102-42	82.85	68.35	42 Tooth 1" HTD Pump Pulley - 5/8" Shaft
104 46102-44	84.95	70.08	44 Tooth 1" HTD Pump Pulley - 5/8" Shaft
104 46102-48	90.20	74.41	48 Tooth 1" HTD Pump Pulley - 5/8" Shaft
104 46103-35	31.40	25.90	35 Tooth Pulley Guard Set
104 46103-36	31.40	25.90	36 Tooth Pulley Guard Set

PART NO	NET US\$	JOBBER	DESCRIPTION
104 46103-38	31.40	25.90	38 Tooth Pulley Guard Set
104 46103-40	31.40	25.90	40 Tooth Pulley Guard Set
104 46103-42	37.70	31.10	42 Tooth Pulley Guard Set
104 46103-44	44.00	36.30	44 Tooth Pulley Guard Set
104 46103-45	47.15	38.89	45 Tooth Pulley Guard Set
104 46103-48	52.40	43.23	48 Tooth Pulley Guard Set

<b>OIL PUMP MANIFOLDS &amp; FITTINGS -WELDED STAINLESS STEEL - OTHERS AVAILABLE UPON REQUEST</b>
--

118 34001	148.75	122.72	Oil pressure in tube w/120o bend & 2 -04M oiler fittings, -12F to M
118 34002	126.00	103.95	Oil pressure in tube w/120o bend & -12 F to F
118 34003	157.50	129.94	Oil pressure in tube w/120o bend & 2 -06M oiler fittings, -12F to F
118 34004	148.75	122.72	Oil pressure in tube w/120o bend & 1 -06M oiler fitting, -12F to M
118 34005	78.75	64.97	Oil in fitting 1/2M NPT to -12M AN 3.00" OAL
118 34006	78.75	64.97	Oil in fitting 3/8M NPT to -12M AN 3.00" OAL
118 34000	255.00	210.38	3 port scavenge manifold for SBC Proline Pump - Straight up - 16 out forward - 20 available
118 34001	295.00	243.38	3 port scavenge manifold for SBF Proline Pump - 90d layover - 16 out forward - 20 available
118 34100	285.00	235.13	4 port scavenge manifold for SBC Proline Pump - Straight up - 16 out forward - 20 available
118 34101	325.00	268.13	4 port scavenge manifold for SBF Proline Pump - 90d layover - 16 out forward - 20 available
118 34007	118.50	97.76	12X12 90 Degree Swivel Adapter
118 34008	118.50	97.76	16 AN Male x 12 MS Male 90 Degree Adapter Stainless Steel
118 34121	225.00	185.63	2 Port 90 Degree RSM Scavenge Outlet Manifold Stainless Steel
118 34104	225.00	185.63	2 Port 90 Degree LSM Scavenge Outlet Manifold Stainless Steel
118 34122	185.00	152.63	2 Port Standard Scavenge Outlet Manifold Stainless Steel
118 34103	275.00	226.88	3 Port 90 Degree Scavenge Outlet Manifold Stainless Steel
118 34101	225.00	185.63	3 Port Standard Scavenge Outlet Manifold Stainless Steel
118 34100	325.00	268.13	4 Port Standard Scavenge Outlet Manifold Stainless Steel
118 34102	375.00	309.38	4 Port 90 Degree Scavenge Outlet Manifold Stainless Steel

<b>108 OIL PUMP FITTINGS</b>
------------------------------

108 30800	9.60	7.92	Straight Fitting -05M Pump port to -06M AN
108 30808	9.60	7.92	Straight Fitting -06M Pump port to -06M AN
108 30810	9.60	7.92	Straight Fitting -06M Pump port to -08M AN
108 30820	9.60	7.92	Straight Fitting -08M Pump port to -08M AN
108 30821	10.35	8.54	Straight Fitting -08M Pump port to -10M AN
108 30822	10.60	8.75	Straight Fitting -08M Pump Port to -12M AN
108 30828	10.35	8.54	Straight Fitting -10M Pump Port to -08M AN
108 30830	10.35	8.54	Straight Fitting -10M Pump Port to -10M AN
108 30831	10.60	8.75	Straight Fitting -10M Pump Port to -12M AN
108 30832	10.60	8.75	Straight Fitting -10M Pump Port to -16M AN
108 30840	10.60	8.75	Straight Fitting -12M Pump Port to -10M AN
108 30841	10.60	8.75	Straight Fitting -12M Pump Port to -12M AN
108 30842	18.45	15.22	Straight Fitting -12M Pump port to -16M AN
108 30850	19.65	16.21	Straight Fitting -16M Pump port to -16M AN
108 30851	24.95	20.58	Straight Fitting -16M Pump port to -20M AN
108 30861	8.40	6.93	-05 Allen Plug
108 30862	8.40	6.93	-06 Allen Plug
108 30866	8.40		-07 Allen Plug
108 30863	8.40	6.93	-08 Allen Plug
108 30864	8.55	7.05	-10 Allen Plug
108 30865	9.10	7.51	-12 Allen Plug
108 30817	8.40	6.93	-07 Hex Plug
108 30872	8.55	7.05	-10 Hex Plug
108 30873	9.10	7.51	-12 Hex Plug
108 31314-10	22.50	380.00	-10 Pan Screen Fitting
108 31314-12	22.50	380.00	-12 Pan Screen Fitting
108 31315-10	47.50	380.00	-10 x 90 Degree Pan Screen Fitting
108 31315-12	47.50	380.00	-12 x 90 Degree Pan Screen Fitting
108 984506	15.90	10.97	-06 Male Flare to -06 O-Ring Boss 45°
108 984568	29.86	20.60	-06 Male Flare to -08 O-Ring Boss 45°
108 984581	33.00	22.77	-08 Male Flare to -10 O-Ring Boss 45°
108 984586	29.86	20.60	-08 Male Flare to -06 O-Ring Boss 45°
108 984508	18.22	12.57	-08 Male Flare to -08 O-Ring Boss 45°
108 984510	27.52	18.99	-10 Male Flare to -10 O-Ring Boss 45°
108 984511	41.48	28.62	-10 Male Flare to -12 O-Ring Boss 45°
108 984509	33.00	22.77	-10 Male Flare to -08 O-Ring Boss 45°
108 984513	41.48	28.62	-12 Male Flare to -10 O-Ring Boss 45°
108 984512	41.48	28.62	-12 Male Flare to -12 O-Ring Boss 45°
108 984516	55.43	38.25	-16 Male Flare to -16 O-Ring Boss 45°
108 989006	14.32	9.88	-06 Male Flare to -06 O-Ring Boss 90°
108 989068	29.86	20.60	-06 Male Flare to -08 O-Ring Boss 90°
108 989081	33.00	22.77	-08 Male Flare to -10 O-Ring Boss 90°

PART NO	NET US\$	JOBBER	DESCRIPTION
108 989086	29.86	20.60	-08 Male Flare to -06 O-Ring Boss 90°
108 989008	16.36	11.29	-08 Male Flare to -08 O-Ring Boss 90°
108 989010	25.49	17.59	-10 Male Flare to -10 O-Ring Boss 90°
108 989011	41.48	28.62	-10 Male Flare to -12 O-Ring Boss 90°
108 989009	33.00	22.77	-10 Male Flare to -08 O-Ring Boss 90°
108 989013	41.48	28.62	-12 Male Flare to -10 O-Ring Boss 90°
108 989012	39.19	27.04	-12 Male Flare to -12 O-Ring Boss 90°
108 989016	54.41	37.54	-16 Male Flare to -16 O-Ring Boss 90°
108 30900-04	4.95	37.54	04 Plastic Fitting Cap - Pack of 25
108 30900-06	4.95	37.54	06 Plastic Fitting Cap - Pack of 25
108 30900-08	4.95	37.54	08 Plastic Fitting Cap - Pack of 25
108 30900-10	4.95	37.54	10 Plastic Fitting Cap - Pack of 18
108 30900-12	4.95	37.54	12 Plastic Fitting Cap - Pack of 18
108 30900-16	4.95	37.54	16 Plastic Fitting Cap - Pack of 12
108 30900-20	4.95	37.54	20 Plastic Fitting Cap - Pack of 12
108 31000-04	4.95	37.54	04 Plastic Fitting Plug - Pack of 25
108 31000-06	4.95	37.54	06 Plastic Fitting Plug - Pack of 25
108 31000-08	4.95	37.54	08 Plastic Fitting Plug - Pack of 25
108 31010-10	4.95	37.54	10 Plastic Fitting Plug - Pack of 18
108 31000-12	4.95	37.54	12 Plastic Fitting Plug - Pack of 18
108 31000-16	4.95	37.54	16 Plastic Fitting Plug - Pack of 12
108 31000-20	4.95	37.54	20 Plastic Fitting Plug - Pack of 12

**PATTERSON/AVIAID DRY SUMP OIL TANKS - BRACKETS - FITTINGS - ACCESSORIES**

**with cap, AN-12 drain and 3 AN-12 female fittings for inlet, outlet and engine vent, & 1-1/2" OD/-12 vent stack**

110 50010	332.00	273.90	1.0 Gallon Capacity, 15.0" Tall, 6" Diameter
110 50015	332.00	273.90	1.5 Gallon Capacity, 17.5" Tall, 6" Diameter
110 50020	346.00	285.45	2.0 Gallon Capacity, 20.5" Tall, 6" Diameter
110 50025	346.00	285.45	2.5 Gallon Capacity, 25.5" Tall, 6" Diameter
110 50030	360.00	297.00	3.0 Gallon Capacity, 16.5" Tall, 9" Diameter
110 50040	360.00	297.00	4.0 Gallon Capacity, 18.0" Tall, 9" Diameter
110 50050	376.00	310.20	5.0 Gallon Capacity, 22.0" Tall, 9" Diameter
110 50200	38.00	31.35	6" Diameter oil tank bracket assembly
110 50201	40.00	33.00	9" Diameter oil tank bracket assembly
110 50210	26.00	21.45	AN-16 inlet & outlet female fittings, installed on tank, replacing standard AN-12 to allow -20 inlet
110 50211	38.00	31.35	Fitting Kit -10 (contains 2 ea AN-12x10 and 1 ea AN-12x12 fittings & AN-12 plug)
110 50212	38.00	31.35	Fitting Kit -12 (contains 3 ea AN-12x12 fittings and 1 ea AN-12 plug)
110 50214	42.00	34.65	Fitting Kit -16/12 (contains 1 ea AN-16x12 fittings, 2 ea AN-12 fitting and 1 ea AN-12 plug)
110 50216	42.00	34.65	Fitting Kit -16 (contains 2 ea AN-16x12 fittings, 1 ea AN-12 fitting and 1 ea AN-12 plug)
110 50217	48.00	39.60	Fitting Kit -20 (contains 2 ea AN-20x16 fittings, 1 ea AN-12 fitting and 1 ea AN-12 plug)
110 50220	89.00	73.43	Breather Can
110 50218	28.65	23.64	Breather Can Fitting Kit, 2 x AN-12 Fittings
110 50221	78.94	65.13	Sight Tube, installed on tank
110 50222	112.50	92.81	Heater Kit - 6" tank - 500 Watt heater probe, 120 VAC, wire & connectors
110 50223	112.50	92.81	Heater Kit - 9" tank - 500 Watt heater probe, 120 VAC, wire & connectors
110 50225	9.00	7.43	Tank Cap
110 50226	9.00	7.43	Weld-on tank Neck
110 50227	14.00	11.55	Magnetic Drain Plug
110 50228	47.00	38.78	Additional inlet, outlet, or vent fitting - per installed fitting
110 50230	57.00	47.03	Heater Probe only 500 Watt heater, 120 VAC
110 50210	26.00	21.45	Tank Fittings 16F I&O
110 50224-6	10.00	8.25	Tank O-Ring Buna 6"
110 50224-9	10.00	8.25	Tank O-Ring Buna 9"
110 50235-6	11.25	9.28	Tank Strap Assembly 6"
110 50235-9	11.25	9.28	Tank Strap Assembly 9"
110 50244-1	26.93	22.22	Vent Filter 1-1/2"
110 50232-8	47.00	38.78	Vent Stack 1-1/2" OD
110 50232-6	47.00	38.78	Vent Stack 1-3/8" PD
110 50245	22.50	18.56	Heater Cable Assembly
110 50231			Polishing or Anodizing Service Pricing on request

**ATI DAMPER ASSEMBLIES FOR AVIAID DRY SUMP PUMP PACKAGES**

111 917239	552.72	455.99	ATI 6.75 OD Camaro Damper Assembly LS1 W/ 60% Serpentine Scavenge Pump Drive
111 917239A	562.44	464.01	ATI 6.75 OD Camaro Damper Assembly LS1 W/ HTD Dry Sump Pump Drive
111 917249	552.72	455.99	ATI 6.75 OD Corvette Damper Assembly LS1 W/ 60% Serpentine Scavenge Pump Drive
111 917249A	562.44	464.01	ATI 6.75 OD Corvette Damper Assembly LS1 W/ HTD Dry Sump Pump Drive
111 918470	595.19	491.03	ATI 7.074 OD Honda VTEC Damper Assembly w/ Serpentine Drive
111 918036	475.56	22.66	Damper Assembly ATI Ford Modular V8 2004 Cobra

PART NO	NET US\$	JOBBER	DESCRIPTION
111 918035	475.56	22.66	Damper Assembly ATI Ford Modular V8 4.6
111 916142	164.84	24.61	Damper Hub ATI BBC W/25 Tooth HTD Drive
111 916037	206.25	20.60	Damper Hub ATI LS1 Camaro Standard w/ 60% Serpentine Drive
111 916033	206.25	20.60	Damper Hub ATI LS1 Corvette Standard w/ 60% Serpentine Drive
111 996037A	218.54	180.30	Damper Hub ATI LS1 F Body W/25 Tooth HTD Steel
111 916039	225.40	22.66	Damper Hub ATI LS1 ASA w/25 Tooth HDTD Aluminum
111 916045L	132.30	20.60	Damper Hub ATI LS1 Standard Steel
111 996033A	218.54	180.30	Damper Hub ATI LS1 Y Body W/28 Tooth HTD Steel
111 910020	337.52	9.95	Damper Shell ATI LS1

**XRP STAINLESS BRAIDED HOSE & FITTINGS - FULL LINE AVAILABLE - CALL FOR INFO**

014 100010	12.06	9.95	-10 Straight Hose End - Aluminum
014 103010	27.47	22.66	-10 30° Fixed Hose End - Aluminum
014 104510	24.97	20.60	-10 45° Fixed Hose End - Aluminum
014 106010	27.47	22.66	-10 60° Fixed Hose End - Aluminum
014 109010	24.97	20.60	-10 90° Fixed Hose End - Aluminum
014 112010	29.83	24.61	-10 120° Fixed Hose End -Aluminum
014 115010	29.83	24.61	-10 150° Fixed Hose End - Aluminum
014 118010	29.83	24.61	-10 180° Fixed Hose End - Aluminum
014 203010	29.41	24.26	-10 30° Double Swivel Hose End - Aluminum
014 204510	26.73	22.05	-10 45° Double Swivel Hose End - Aluminum
014 206010	29.41	24.26	-10 60° Double Swivel Hose End - Aluminum
014 209010	26.73	22.05	-10 90° Double Swivel Hose End - Aluminum
014 212010	29.27	24.15	-10 120° Double Swivel Hose End -Aluminum
014 215010	29.27	24.15	-10 150° Double Swivel Hose End -Aluminum
014 218010	29.27	24.15	-10 180° Double Swivel Hose End -Aluminum
014 100012	16.67	13.75	-12 Straight Hose End - Aluminum
014 103012	34.24	28.25	-12 30° Fixed Hose End - Aluminum
014 104512	31.13	25.68	-12 45° Fixed Hose End - Aluminum
014 106012	34.24	28.25	-12 60° Fixed Hose End - Aluminum
014 109012	31.13	25.68	-12 90° Fixed Hose End - Aluminum
014 112012	33.72	27.82	-12 120° Fixed Hose End -Aluminum
014 115012	33.72	27.82	-12 150° Fixed Hose End - Aluminum
014 118012	33.72	27.82	-12 180° Fixed Hose End - Aluminum
014 203012	35.70	29.45	-12 30° Double Swivel Hose End - Aluminum
014 204512	32.46	26.78	-12 45° Double Swivel Hose End - Aluminum
014 204513	53.27	43.95	-12 to -16 45° Double Swivel Hose End - Aluminum
014 206012	35.70	29.45	-12 60° Double Swivel Hose End - Aluminum
014 209012	32.46	26.78	-12 90° Double Swivel Hose End - Aluminum
014 209013	53.27	43.95	-12 to -16 90° Double Swivel Hose End -Aluminum
014 212012	35.13	28.98	-12 120° Double Swivel Hose End -Aluminum
014 215012	35.13	28.98	-12 150° Double Swivel Hose End -Aluminum
014 218012	35.13	28.98	-12 180° Double Swivel Hose End -Aluminum
014 100016	27.15	22.40	-16 Straight Hose End - Aluminum
014 100017	33.03	27.25	-16 Hose to -12 Straight Hose End - Aluminum
014 103016	45.65	37.66	-16 30° Fixed Hose End - Aluminum
014 104516	41.50	34.24	-16 45° Fixed Hose End - Aluminum
014 106016	45.65	37.66	-16 60° Fixed Hose End - Aluminum
014 109016	41.50	34.24	-16 90° Fixed Hose End - Aluminum
014 112016	49.28	40.66	-16 120° Fixed Hose End -Aluminum
014 115016	49.28	40.66	-16 150° Fixed Hose End - Aluminum
014 118016	49.31	40.68	-16 180° Fixed Hose End - Aluminum
014 203016	43.39	35.80	-16 30° Double Swivel Hose End - Aluminum
014 203017	48.39	39.92	-16 to -12 30° Double Swivel Hose End - Aluminum
014 204516	40.00	33.00	-16 45° Double Swivel Hose End - Aluminum
014 204517	48.39	39.92	-16 to -12 45° Double Swivel Hose End - Aluminum
014 206016	44.10	36.38	-16 60° Double Swivel Hose End - Aluminum
014 206017	48.39	39.92	-16 to -12 60° Double Swivel Hose End - Aluminum
014 209016	40.10	33.08	-16 90° Double Swivel Hose End - Aluminum
014 209017	48.39	39.92	-16 to -12 90° Double Swivel Hose End - Aluminum
014 212016	60.21	49.67	-16 120° Double Swivel Hose End -Aluminum
014 212017	68.50	56.51	-16 to -12 120° Double Swivel Hose End - Aluminum
014 215016	60.21	49.67	-16 120° Double Swivel Hose End -Aluminum
014 215017	68.50	56.51	-16 to -12 150° Double Swivel Hose End - Aluminum
014 218016	60.21	49.67	-16 180° Double Swivel Hose End -Aluminum

PART NO	NET US\$	JOBBER	DESCRIPTION
014 218017	68.50	56.51	-16 to -12 180° Double Swivel Hose End - Std. Radius - Alum
014 100020	42.42	35.00	-20 Straight Hose End - Aluminum
014 104520	80.41	66.34	-20 45° Fixed Hose End - Aluminum
014 109020	80.41	66.34	-20 90° Fixed Hose End - Aluminum
014 204520	82.85	68.35	-20 45° Double Swivel Hose End - Aluminum
014 209020	86.80	71.61	-20 90° Double Swivel Hose End - Aluminum
014 300010	9.02	7.44	-10 Stainless Braided Hose - Bulk, Per ft.
014 300012	10.18	8.40	-12 Stainless Braided Hose - Bulk, Per ft.
014 300016	12.84	10.59	-16 Stainless Braided Hose - Bulk, Per ft.
014 300020	18.10	14.93	-20 Stainless Braided Hose - Bulk, Per ft.
014 310010	15.25	12.58	-10 Stainless Steel Internal Support Coil .600" OD
014 310012	12.12	10.00	-12 Stainless Steel Internal Support Coil .730" OD
014 310016	12.12	10.00	-16 Stainless Steel Internal Support Coil .940" OD
014 320210	7.19	5.93	-10 Silver Silicone Fyre Jacket Per ft.
014 320212	8.48	7.00	-12 Silver Silicone Fyre Jacket Per ft.
014 320216	9.09	7.50	-16 Silver Silicone Fyre Jacket Per ft.
014 320220	11.43	9.43	-20 Silver Silicone Fyre Jacket Per ft.

**XRP PUSH-ON HOSE & FITTINGS**

014 230008	5.51	3.80	-8 Straight Push-On Hose End - Aluminum
014 233008	28.30	19.53	-8 30° Push-On Hose End - Aluminum
014 234508	23.88	16.48	-8 45° Push-On Hose End - Aluminum
014 239008	23.88	16.48	-8 90° Push-On Hose End - Aluminum
014 231208	27.88	19.24	-8 120° Push-On Hose End - Aluminum
014 231508	27.88	19.24	-8 150° Push-On Hose End - Aluminum
014 231808	27.88	19.24	-8 180° Push-On Hose End -Aluminum
014 230010	7.52	5.19	-10 Straight Push-On Hose End - Aluminum
014 233010	30.62	21.13	-10 30° Push-On Hose End - Aluminum
014 234510	27.68	19.10	-10 45° Push-On Hose End - Aluminum
014 236010	30.62	21.13	-10 60° Push-On Hose End - Aluminum
014 239010	27.68	19.10	-10 90° Push-On Hose End - Aluminum
014 231210	31.17	21.51	-10 120° Push-On Hose End - Aluminum
014 231510	31.17	21.51	-10 150° Push-On Hose End - Aluminum
014 231810	31.17	21.51	-10 180° Push-On Hose End - Aluminum
014 230012	13.96	9.63	-12 Straight Push-On Hose End - Aluminum
014 233012	35.67	24.61	-12 30° Push-On Hose End - Aluminum
014 234512	31.58	21.79	-12 45° Push-On Hose End - Aluminum
014 236012	35.67	24.61	-12 60° Push-On Hose End - Aluminum
014 239012	31.58	21.79	-12 90° Push-On Hose End - Aluminum
014 231212	35.48	24.48	-12 120° Push-On Hose End - Aluminum
014 231512	35.49	24.49	-12 150° Push-On Hose End - Aluminum
014 231812	35.48	24.48	-12 180° Push-On Hose End - Aluminum
014 340008	5.32	3.67	-8 Push-On Hose, Blue Cover, CPE Tube - Bulk, Per ft.
014 340010	7.17	4.95	-10 Push-On Hose, Blue Cover, CPE Tube - Bulk, Per ft.
014 340012	8.51	5.87	-12 Push-On Hose, Blue Cover, CPE Tube - Bulk, Per ft.

**XRP HS-79/HS-79XP LITE WEIGHT TEFLON LINED HOSE - AVAILABLE ON REQUEST TO ORDER**

**OIL PANS - CIRCLE TRACK - WET SUMP - STEEL STAMPED CORE**

151 51190	397.60	328.02	SBC - Sprint Car/Modified - 7" deep, Below rail kickout, mini starter, 8 qt..
151 51320/2	346.90	286.19	302/351 W - Rear Sump, no crossmembers, 12" long, 7 1/2" deep, 14" wide, 8 1/2 qt..
151 51330/2	319.75	263.79	302/351 W - Rear Sump, stock crossmember - 12" long, 7 1/2" deep, 14" wide, 8 1/2 qt..

**OIL PANS - DRY SUMP - ALL APPLICATIONS - STEEL STAMPED CORE**

152 52100	235.50	194.29	SBC - 4 1/2" deep, no kickout, 2-12 right side, windage screen
152 52110	320.70	264.58	SBC - 4 1/2" deep, below the rail kickout, 2 -12 right side, windage screen
152 52130	421.80	347.99	SBC - 4-1/2" front 5" deep rear, kickout below the rail, 2 -12 right side, windage screen
152 52200	292.35	241.19	BBC - 5" deep, Stroker Core, 3 -12 right side, windage screen
152 52201	348.60	287.60	BBC - 5" deep, Stroker Core, 3 -12 left side, windage screen
152 52210	475.00	391.88	BBC - 6-1/2" deep, Stroker Core, 3 -12 left side outlets from trough, windage screen
152 52310	381.80	314.99	SBF - 289/302, 5" deep, 2 -12 right side, windage screen
152 52320	415.75	342.99	SBF - 351 W, 5" deep, 3 -12 right side, windage screen (4 bolt rear main cap add \$125)
152 52430	292.35	241.19	BBF - 460 2 Pickup Dry Sump Pan
152 52431	348.60	287.60	BBF - 460 3 Pickup Dry Sump Pan
152 52412	475.00	391.88	BBF - FE Ford - 5-1/2" deep for Cobra chassis, 3 -12 left side outlets
152 52501	349.60	288.42	LS2 - 3 1/2" deep, no kickout, 2-10 right side, windage screen - fits LS1-6
152 52581	564.58	465.78	LS2 Stock cast aluminum pan - modified w/ 2, -10 dry sump pickups



PART NO	NET US\$	JOBBER	DESCRIPTION
<b>OIL PANS - DRAG RACE - WET SUMP - FABRICATED ALUMINUM - by Billet Fabrication or Stef's Fabrication</b>			
153 53107	674.00	556.05	All Models
<b>OIL PANS - DRAG RACE - DRY SUMP - FABRICATED ALUMINUM - by Billet Fabrication or Stef's Fabrication</b>			
154 54107	674.00	556.05	All Models - 2 Pickups
154 54107-01	48.00	39.60	Add for extra pickup
<b>OIL PANS - ROAD RACE - WET SUMP (All Road Race Pan Prices Include Pick-up)</b>			
155 55110	496.60	409.70	SBC - Camaro, Original 69 Trans Am, 11" long, 7 1/4" deep, 12" wide, 6 1/2 qt..
155 55112	496.60	409.70	SBC - Camaro, Revised 69 Trans Am, 12" long, 8" deep, 14" wide, 8 qt..
155 55114	496.60	409.70	SBC - Camaro, Revised 70 Trans Am, 12" long, 8" deep, 14" wide, 8 qt..
155 55120	496.60	409.70	SBC - Corvette, 12" long, 7 1/4" deep, 14 1/2" wide, 7 1/2 qt..
155 55122	496.60	409.70	SBC - Corvette, Revised 12" long, 8" deep, 14 1/2" wide, 8 1/2 qt..
155 55240	525.00	433.13	BBC - Corvette, 12" long, 7 1/4" deep, 14 1/2" wide, 7 1/2 qt..
155 55301	396.60	327.20	SBF - 289/302 dual sump, 79 & up Mustang, 8 1/2" long, 8 1/2" deep, 13 1/2" wide, 6 qt.
155 55310	396.60	327.20	SBF - 351W, dual sump, 79 & up mustang conversions, 8" long, 8 1/2" deep, 13 1/2" wide, 6 qt.
155 55320	396.60	327.20	SBF - 289/302, front sump, 10" long, 7 1/2" deep, 12 1/2" wide, 6 qt..
155 55325	396.60	327.20	SBF - 351W, front sump, 10" long, 7 1/2" deep, 12 1/2" wide, 6 qt..
155 55326	464.25	383.01	SBF - 289/302, Holmann/Moody front sump, 11" long, 8 1/2" deep, 13 1/2" wide, 8-1/2 qt
155 55328	464.25	383.01	SBF - 351W, Holmann/Moody front sump, 11" long, 8 1/2" deep, 13 1/2" wide, 8-1/2 qt
155 55335	464.25	383.01	SBF - 289/302, front sump, 10" long, 9 1/2" deep with skid plate, 12 1/2" wide, 9 1/2 qt.
155 55340	464.25	383.01	SBF - 351W, front sump, 10" long, 9 1/2" deep with skid plate, 12 1/2" wide, 9 1/2 qt..
155 55350	464.25	383.01	SBF - 289/302, front sump, original GT-350 "R" model, 10" long, 7 1/2" deep, 11 1/2" wide, 6 qt
155 55351	464.25	383.01	SBF - 351W, front sump, original GT-350 "R" model, 10" long, 7 1/2" deep, 11 1/2" wide, 6 qt..
155 55355	496.60	409.70	SBF - 289/302, front sump, original 289 Cobra, 15" long, 7 1/2" deep, 11 1/2" wide, 8 1/2 qt..
155 55356	496.60	409.70	SBF - 351W, front sump, original 289 Cobra, 15" long, 7 1/2" deep, 11 1/2" wide, 8 1/2 qt..
155 55357	496.60	409.70	SBF - 289/302, Bud Moore front sump, 11" long, 8 1/2" deep, 13 1/2" wide, 8-1/2 qt
155 55358	496.60	409.70	SBF - 351W, Bud Moore front sump, 11" long, 8 1/2" deep, 13 1/2" wide, 8-1/2 qt
155 55360	574.40	473.88	SBF - 289/302, front sump, original GT-40, 15" long, 6 1/2" deep, 12" wide, 5-1/2 qt
155 55361	574.40	473.88	SBF - 351W, front sump, original GT-40, 15" long, 6 1/2" deep, 12" wide, 5-1/2 qt
155 55362	524.60	432.80	SBF - 289/302, front sump, original Daytona Coupe, 15" long, 6 1/2" deep, 12" wide, 6 qt
155 55363	524.60	432.80	SBF - 351W, front sump, original Daytona Coupe, 15" long, 6 1/2" deep, 12" wide, 6 qt
155 55365	421.45	347.70	SBF - 351C, Pantera, 16" long, 8 1/4" deep, 9 1/4" wide, 9 1/2 qt..
155 55366	437.95	361.31	SBF - 289/302, Mangusta/Pantera, 16" long, 7-1/2" deep, 9 1/4" wide, 8 1/2 qt..
155 55367	437.95	361.31	SBF - 351W, Pantera, 16" long, 7-1/2" deep, 9 1/4" wide, 8 1/2 qt..
155 55370	496.60	409.70	SBF - 289/302, Sunbeam Tiger, 13" long, 7 1/2" deep, 11 1/4" wide, 8 qt..
155 55410	649.00	535.43	BBF - 427, original 427 Cobra, dual tray, 18" long, 6" deep, front, 4 1/2" rear, 12 1/4" wide, 9 qt
155 55412	496.60	409.70	BBF - 427, front sump, 10" long, 6-1/2" deep, 12 1/2" wide, 6 qt, includes 427 Cobra windage Tray
155 55430	464.25	383.01	BBF - 460, center sump, Pantera conversions, 14" long, 8-1/4" deep, 9 1/2" wide, 7 qt
155 55435	496.60	409.70	BBF - 460, 427 Cobra Style, "D" Style Pump Pickup
155 55700	599.00	494.18	AMC - Javelin, 10" long, 7 1/2" deep, 12" wide, 7 qt. W/ External Pickup
<b>OIL PANS - MARINE - WET SUMP</b>			
157 57100	316.00	260.70	SBC - Jet Drive, 9 qt..
157 57110	368.70	304.18	SBC - Jet Drive, 12 qt..
157 57120	351.50	289.99	SBC - V-Drive, 9 qt..
157 57130	427.75	352.89	SBC - V-Drive, 12 qt..
157 57140	575.00	474.38	SBC - Hydro, 4 1/2" rear, 6 1/2" flywheel, 6 qt..
157 57200	342.00	282.15	BBC - Jet Drive, 10 qt..
157 57210	406.00	334.95	BBC - Jet Drive, 14 qt..
157 57220	370.00	305.25	BBC - V-Drive, 10 qt..
157 57230	446.50	368.36	BBC - V-Drive, 14 qt..
157 57240	473.95	391.01	BBC - offshore, 8 1/2" deep, 13" long sump, 9 qt..
157 57242	575.00	474.38	BBC Gen 4 Wet Sump Offshore Rear Sump Pan, Stroker Notches, 9" deep, 15" wide, 12" long, 14 qt.
157 57243	575.00	474.38	BBC Gen 5/6 Wet Sump Offshore Rear Sump Pan, Stroker Notches, 9" deep, 15" wide, 12" long, 14 qt.
157 57250	490.00	404.25	BBC - 8 1/2" deep, 14" long sump, 2" below the rail kickout, 9 qt..
157 57260	578.50	477.26	BBC - Super/Pro Stock, full length sump, 7 1/2" or 9" deep, front, 7 1/2" rear, 9 qt..
<b>OIL PANS - MARINE - DRY SUMP</b>			
158 58140	575.00	474.38	SBC - Hydro, 4 1/2" rear, 6 1/2" flywheel, 3 pickup
158 58240	575.00	474.38	BBC - Hydro 6 1/2" deep, 3 Pickup
<b>CAST ALLOY DRY SUMP PANS - by ARE - Pan Pickup -12 Female Oring Ports</b>			
160 61001	674.00	348.00	Chevy LS-1 Corvette Dry Sump Pan 4 Pickup Full Length Sump Pan 4-1/2" Deep
160 61002	788.00	348.00	Chevy LS-1 Corvette Dry Sump Pan 4 Pickup Full Length Sump Pan 4-1/2" Deep W/ Internal pump supply
160 61003	764.00	348.00	Chevy LS-1 Corvette Dry Sump Pan 4 Pickup Full Length Sump Pan 3" Deep w/ Interanal partitions
160 61004	657.00	480.00	Chevy LS-1 Corvette Dry Sump Pan 2 Pickup for Stock Chassis
160 61005	764.00	570.00	As above with Internal Pump Supply Fittings & Seals
160 61006	788.00	348.00	Chevy LS-1 Corvette Dry Sump Pan 4 Pickup Full Length Sump Pan 3" Deep

PART NO	NET US\$	JOBBER	DESCRIPTION
160 61008	960.00	348.00	Chevy LS-1 Corvette Dry Sump Pan 4 Pickup Full Length Sump Pan 3" Deep w/ Mount Points
160 61009	612.00	348.00	Chevy LS-1 Corvette Dry Sump Pan 4 Pickup Full Length Sump Pan 1.4" Deep
160 61010	594.00	396.00	Small Block Chevy Cast Pan, Road Race Type
160 61011	594.00	460.00	Small Block Chevy Cast Pan, Wide rail Rocket Block
160 61012	732.00	460.00	Small Block Chevy Cast Pan, Kick-Out "Indy" Style
160 61013	580.00	490.00	As Above with Deep Rear Sump - 3 Outlets
160 61014	674.00	420.00	Big Block Chevy Cast Pan w/tray-2 outlets
160 61018	810.00	420.00	Big Block Chevy Merlin Wide Rail Cast Pan w/tray-2 outlets
160 61020	595.00	320.00	Chevy 90d V-6 Dry Sump Cast Pan, 2 Oulets
160 61022	578.00	320.00	Chevy Ecotec Dry Sump Cast Pan, 2 Oulets
160 61028	568.00	650.00	Chevy II Dry Sump Pan, 2 Outlets
160 61030	568.00	340.00	Buick V-6 Dry Sump Pan, 2 Outlets
160 61032	568.00	340.00	215 Buick/Rover Dry Sump Pan, 2 Outlets
160 61050	632.00	420.00	Ford Zetec Dry Sump Pan
160 61055	594.00	320.00	Duratec Ford, FF2000 Dry Sump Cast Pan
160 61060	496.00	320.00	Formula Ford, Pinto 1600, Cast Pan
160 61070	790.00	650.00	Formula Ford "Swift" Cast Pan 1600
160 61100	594.00	340.00	Ford Pinto/Capri 2000 Cast pan - Dual Outlets
160 61104	820.00	650.00	Ford 2000"Swift" Cast Pan
160 61110	496.00	340.00	Nissan KA-24 Cast Pan
160 61120	568.00	380.00	Nissan/Datsun 240Z - 280Z Cast Pan w/ Rack Clearance Notch
160 61122	568.00	380.00	Nissan/Datsun 240Z - 280Z Cast Pan Full Length Trough
160 61130	496.00	340.00	Nissan/Datsun L-16 - L-20 Cast Pan
160 61140	544.00	380.00	Datsun A12, A13, A14 Cast Pan
160 61150	568.00	380.00	Nissan 3.0 V-6 Cast Pan
160 61155	595.00	380.00	Nissan 3.5 V-6 Turbo Cast Pan
160 61160	568.00	380.00	Nissan SR 20 DET/DE TT Cast Pan
160 61220	568.00	340.00	Pontiac 2.5 Litre 4 Cylinder Cast Pan
160 61222	568.00	340.00	Pontiac 2.5 Litre 4 Cylinder Fiero Cast Pan
160 61230	595.00	340.00	Toyota 1600 formula Atlantic Cast Pan 2 or 3 outlets
160 61232		340.00	Toyota 6 Cyl Supra
160 61300	568.00	380.00	Alfa Romeo Cast Pan
160 61302	622.00	480.00	Ford 302-351W 4 Scavenge outlets-12
160 61305	696.00	650.00	Ford 5.0 Mustang Dry Sump Pan, Rear Sump, 2 Outlets
160 61306	696.00	340.00	Ford 351W Dry Sump Pan, 2 Outlets, 4" Deep
160 61310	642.00	480.00	Ford Modular V8 Dry Sump Pan 2 Pickup for Stock Chassis
160 61240	568.00	380.00	BMW M10 2002-318 Cast Dry Sump Pan, 2 Outlets
160 61250	568.00	380.00	BMW M42 "M" Series Cast Dry Sump Pan, 2 Outlets
160 61251	595.00	380.00	BMW M50 6 Cylinder Cast Dry Sump Pan, 3 Outlets
160 61254	595.00	380.00	BMW M50 6 Cylinder Cast Dry Sump Pan, 3 Outlets, W/ Crossmember Notch
160 61260	595.00	380.00	Mazda Miata Cast Pan
160 61280	595.00	380.00	Honda V-Tech Cast Dry Sump Pan, 2 Outlets
160 61282	595.00	380.00	Honda S-2000 Cast Dry Sump Pan, 2 Outlets
160 91284	595.00	380.00	Honda K20A Cast Dry Sump Pan, 2 Outlets
160 61286	595.00	380.00	Honda F22A/H22A Cast Dry Sump Pan, 2 Outlets
160 61290		380.00	Porsche 944 Dry Sump Pan Cast
160 61314	36.00	480.00	Additional Pickup for Dry Sump Pans
160 61314-10	22.50	380.00	AN10 Pan Screen Fitting
160 61314-12	22.50	380.00	AN12 Pan Screen Fitting

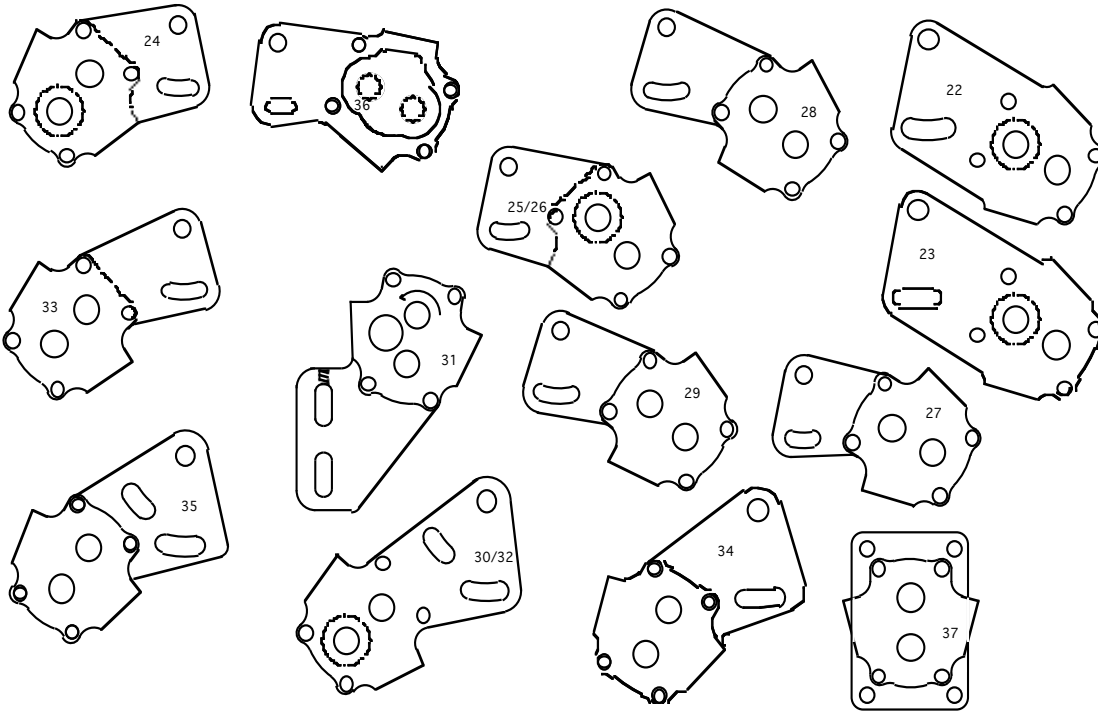
PICK-UPS, OPTIONS & ACCESSORIES FOR WET SUMP PANS - SPECIFY PAN			
---	--	--	--

159 59022	85.00	70.13	Below Rail Kickout
159 59100	35.35	29.16	SBC pickup, Standard volume oil pump 55
159 59102	36.75	30.32	SBC pickup, Hi volume oil pump 55HV
159 59104	36.75	30.32	SBC pickup, bolt on pickup oil pump 10555
159 59106	36.75	30.32	SBC pickup, BBC oil pump
159 59110	124.50	102.71	SBC AOS modified oil pump M55/M55A/M55HV
159 59112	56.00	46.20	SBC AOS modified oil pump pickup
159 59510	80.16	66.13	LS2 AOS modified oil pump pickup for internal pump supply
159 59210	36.75	30.32	BBC pickup, Standard volume oil pump
159 59220	36.75	30.32	BBC pickup, Hi volume oil pump
159 59210	36.75	380.00	P/U BBC R/S HV 8"
159 59211	37.85	380.00	P/U BBC R/S HV 9-1/2"
159 59212	44.75	380.00	P/U BBC R/S HV 9"
159 59220	56.00	380.00	P/U BBC M/S HV

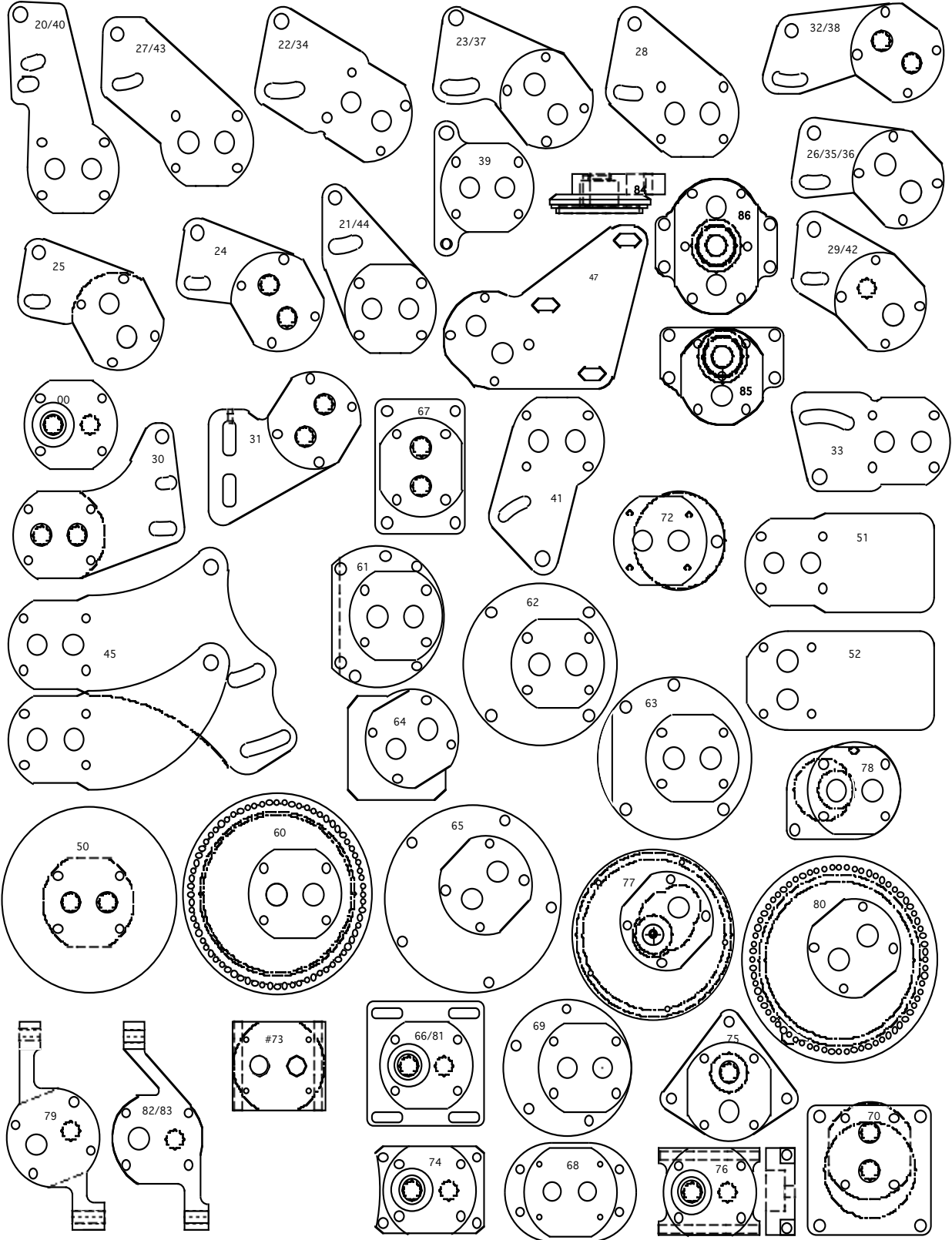
PART NO	NET US\$	JOBBER	DESCRIPTION
159 59310	56.00	380.00	P/U SBF 8-1/2 R/S M.
159 59311	42.00	380.00	P/U SBF 8-1/2 F/S M.
159 59320	56.00	380.00	P/U SBFW 8-1/2 R/S M
159 59321	56.00	380.00	P/U SBFW 8-1/2 RSGIR
159 59330	42.00	380.00	P/U SBFW 7-1/2 F/S M
159 59331	42.00	380.00	P/U SBFW 6-1/2 F/S C
159 59332	42.00	380.00	P/U SBF 9-1/2 F/S M.
159 59333	42.00	380.00	P/U SBFW 7-1/2 F/S C
159 59334	42.00	380.00	P/U SBFW 9-1/2 F/S M
159 59340	42.00	380.00	P/U SBF 7-1/2 F/S M.
159 59341	42.00	380.00	P/U SBF 6-1/2 F/S C.
159 59342	42.00	380.00	P/U SBF 7-1/2 F/S C.
159 59343	56.00	380.00	P/U SBF 8-1/2 R/SGIR
159 59350	56.00	380.00	P/U SBFC PANTERA
159 59410	58.15	380.00	P/U BBF R/S STK
159 59420	58.15	380.00	P/U BBF COBRA D PUMP
159 59430	42.00	380.00	P/U BBF F/S
159 59440	56.00	380.00	P/U FEF 427 COBRA
159 59500	64.00	52.80	Oil pump pickup, most other styles
159 59900	75.00	61.88	Stroker Notches - fabricated
159 59905	70.80	58.41	External pickup or additional scavenge pickup
159 59910	32.50	26.81	SBF #4 main notch,
159 59912	125.00	103.13	SBF #4 main notch & 4 bolt rear main cap
159 59915	28.50	23.51	Extra Temp fitting, drainplug, sight level gauge
159 59925	52.50	43.31	Skid plate
159 59930	54.10	44.63	Windage tray
159 59935	11.00	9.08	Unidirectional windage screen - per square foot - \$8.00 cutting charge
159 59940	34.85	28.75	Plating - oil pan
159 59945	4.65	3.84	Plating - windage tray or screen
159 59950	3.00	2.48	Plating - oil pickup
159 59955	20.00	16.50	Strip pan
159 59935	96.80	79.86	Upper Tray, 427 Cobra
159 59650	12.95	10.68	SBC crank scraper - trim to fit
159 59655	12.75	10.52	BBC crank scraper - trim to fit
159 59660	14.95	12.33	1.6L Ford crank scraper
159 59661	14.95	12.33	2.0L Ford crank scraper
159 59670	14.95	12.33	289/302/351 Ford crank scraper - cut to fit
<b>Oil pan components</b>			
<b>Gated Pickup Box</b>			
660 59930	37.38	30.83	6" square 4 door pickup box trap, 2" tall for 6-1/2" deep pan
660 59930	37.38	30.83	6" square 4 door pickup box trap, 2-7/8" tall for 7-1/2" deep pan
660 59930	37.38	30.83	6" square 4 door pickup box trap, 3-7/8" tall for 8-1/2" deep pan
660 59930	33.63	27.74	6"x 5" 4 door pickup box trap, 2-7/8" tall for 7-1/2" deep front sump pan
660 59930	33.63	27.74	6"x 5" 4 door pickup box trap, 3-7/8" tall for 8-1/2" deep front sump pan
660 59930	33.63	27.74	6"x 5" 4 door pickup box trap, 4-7/8" tall for 9-1/2" deep front sump pan
<b>Pickup boxes, screened</b>			
660 59930	12.52	10.33	Dry sump pickup box, 1.6x1x7/8, 3/4" hole end
660 59930	12.52	10.33	Dry sump pickup box, 1.6x1x7/8, 3/4" hole left end long side face
660 59930	12.52	10.33	Dry sump pickup box, 1.6x1x7/8, 3/4" hole right end long side face
660 59930	12.52	10.33	Dry sump pickup box, 2.4x1.6x7/8, 3/4" hole end
660 59930	12.52	10.33	Dry sump pickup box, 2.4x1.6x7/8, 3/4" hole left end long side face
660 59930	12.52	10.33	Dry sump pickup box, 2.4x1.6x7/8, 3/4" hole right end long side face
660 59930	12.52	10.33	Wet sump pickup box, 2.8x1.6x1, 3/4" hole 1-3/8 long, center top
660 59930	12.52	10.33	Wet sump pickup box, 2.8x1.6x1, 3/4" hole 1-3/8 long, end top
660 59930	12.52	10.33	Wet sump pickup box, 2.8x1.6x1, 7/8" hole top end
<b>Tubing</b>			
660 59930	8.44	6.96	3/4" tube, 180d bend, 8" long both sides
660 59930	4.50	3.71	3/4" tube, 24" length
660 59930	8.44	6.96	3/4" tube, 90d bend, 8" long both sides
660 59930	8.44	6.96	3/4" tube, 90d bend, 8" long one side
660 59930	3.60	2.97	3/8" NPT dip stick bung
660 59930	8.44	6.96	7/8" tube, 180d bend, 8" long both sides
660 59930	5.06	4.18	7/8" tube, 24" length
660 59930	7.88	6.50	7/8" tube, 90d bend, 8" long both sides

PART NO	NET US\$	JOBBER	DESCRIPTION
660 59930	3.94	3.25	1/2" drain plug washer, copper
660 59930	3.94	3.25	1/2" drain plug washer, teflon
660 59930	3.94	3.25	1/2" NPT temp sender bung
660 59930	1.35	1.11	1/2-20 drain plug
660 59930	1.35	1.11	1/2-20 drain plug bung
660 59930	0.14	0.11	Safety wire tab
<b>Miscellaneous components</b>			
660 59930	17.00	14.03	Windage screen, 24" x 12"
660 59930	34.00	28.05	Windage screen, 24" x 24"
660 59930	17.95	14.81	Scraper, small block Ford stepped type
660 59930	14.95	12.33	Scraper, Chevy straight type
660 59930	6.00	4.95	Flange, Ford
660 59930	6.00	4.95	Flange, Chevy bolt on pickup
660 59930	5.40	4.46	Nipple, ground SBC dimension
660 59930	5.40	4.46	Nipple, ground BBC dimension
<b>Oil pan cores, standard wet sump, unplated</b>			
174 74400	40.62	33.51	Oil pan, SBC, 1986-up, 1 pc rear main seal, Left or Right side dip stick
174 74410	31.71	26.16	Oil pan, SBC, 1986-up, 1 pc rear main seal, Right side dip stick
174 74420	23.97	19.77	Oil pan, SBC, 1955-1978 small crescent, driver side dip stick, 2 pc rear main seal
174 74430	23.97	19.77	Oil pan, SBC, 1978-1985 large crescent, driver side dip stick, 2 pc rear main seal
174 74440	30.22	24.93	Oil pan, BBC, Gen IV,
174 74450	30.22	24.93	Oil pan, SBF 289/302
174 74460	28.78	23.75	Oil pan, Chrysler 273-318-340
174 74470	30.38	25.07	Oil pan, Chrysler 360
174 74500	28.78	23.75	Oil pan, FE Ford, 352-390-406-427-428
174 74510	29.92	24.68	Oil pan, BB Ford, 429-460
174 74520	37.78	31.17	Oil pan, SBFW 351 Windsor Ford
174 74530	41.76	34.45	Oil pan, Oldsmobile 455
174 74540	43.78	36.12	Oil pan, Ford 351 Cleveland
174 74550	43.78	36.12	Oil pan, Pontiac 301-455
174 74560	40.72	33.59	Oil pan, BB Chrysler 361-383-440
174 74570	55.74	45.99	Oil pan, SBF 302 Dual sump
174 74590	55.74	45.99	Oil pan, Chevy 229 90d V-6
174 74600	46.38	38.27	Oil pan, Buick 231 V-6
174 74650	41.28	34.06	Oil pan, Chevy 60d V-6
<b>Super Street Oil Pans, Cad 2 gold irridite</b>			
174 74711	60.18	49.65	Oil pan, expanded sump, SBC driver side dip stick, 6 quart
174 74721	60.18	49.65	Oil pan, expanded sump, SBC passenger side dip stick, 6 quart
174 74731	73.33	60.50	Oil pan, expanded sump, BBC 8 quart
174 74741	66.75	55.07	Oil pan, expanded sump, SBF 302, 7 quart
<b>Dip Sticks</b>			
174 71702	11.00	9.08	BBC, Chrome
174 71712	11.00	9.08	Small Block Chevy, chrome
174 71742	11.00	9.08	Small Block Ford, front sump, 289/302/351 chrome

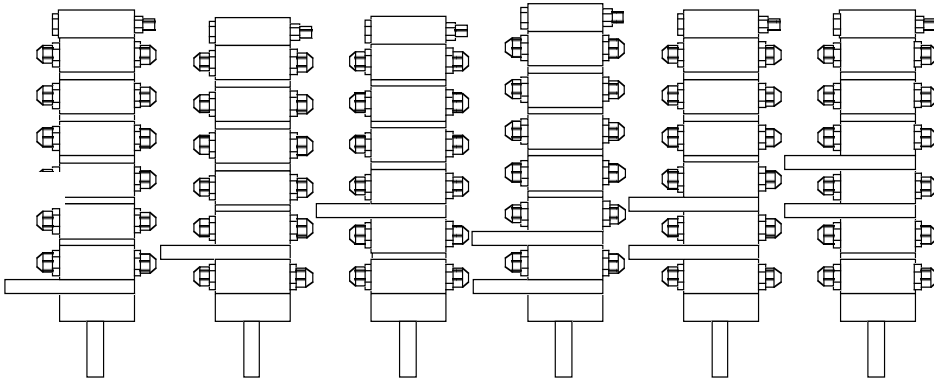
PART NO	NET US\$	JOBBER	DESCRIPTION
<b>S2 Belt &amp; Cam Drive Mounts</b>			
22	DRCE		Left Side Block Mount Blade .500" - Will not clear BBC
23	BBC		Left Side Block Mount Blade .500"
24	SBC		Right Side Trans-Am Mount Blade - Weaver Replacement
25	SBC		Left Side Mount Blade .500" - Weaver Replacement
26	SBC		Left Side Mount Blade .375" - Weaver Replacement
27	SBC		Left Side Block Mount Blade - Standard Front Bolts - 16/28@225L
28	SBC		Left Side Mount Blade .500" - Barnes Replacement
29	SBC		Left Side Mount Blade - Requires no block modifications for 5 or 6 stage pump
30	EEI		Right Side Mount Blade .375" - 3 hole Elliot
31	Bert/Brinn		Bert/Brinn Transmission Mount Blade .500"
32	EEI		Right Side Mount Blade .500" - 3 hole Elliot
33	EEI		Right Side Mount Blade .500" - 3 hole Elliot Old Position
34	BBF		Right Side Block Mount Blade .500"
35	SBC		Left or Right Side Mounting Body #28 Reverse - 1-1/4" & 1-1/2" Width gear
36	SBC		Right Side Mount Blade #28 Standard
37	KSE		KSE Pattern Cam Drive Mount
38	SBC		Left or Right Side Mounting Body #28 Standard - 1-1/4" & 1-1/2" Width gear
39	EEI		Left or Right Side Mounting body #32 Standard - 1-1/4" & 1-1/2" Width Gear



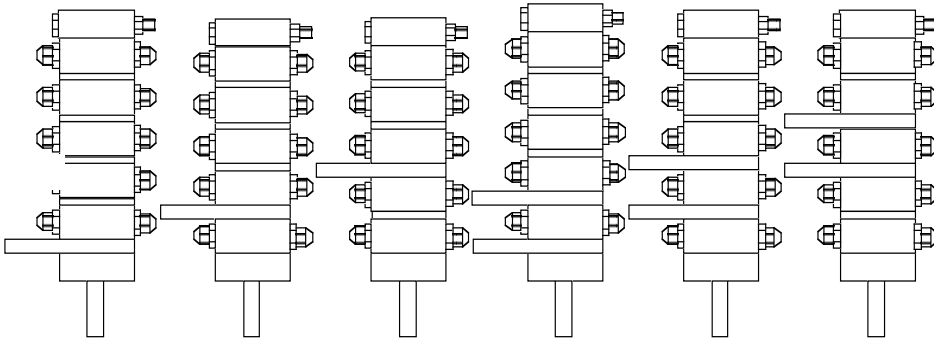
PART NO	NET US\$	JOBBER	DESCRIPTION	
<b>S1 Belt Drive Mounting Blades - LSM Left Side Mount</b>			<b>RSM Right Side Mount</b>	
<b>LSM</b>	<b>RSM</b>	<b>Bolt Ptrn</b>	<b>Right Side</b>	
<b>Application-View from Front - 2nd number is Blade flipped on vertical axis</b>				
20	40	SBC/BBC	40	Low position vertical port Drag Race / Oval Track / Offshore Marine
21	44	SBC		Sprint/Cosworth Midget
22	34	BBC	34	Standard BBC blade - SBF w/ adapter
23	37	BBC	37	BBC Corvette - 427 FE on original AOS Mount
24	46	SBC		Left Side Mount 45D Port Alignment
	25	SBC/Mopar		Left Side Mount 60D Port Alignment
26	36	SBC	36	Standard SBC blade - Oval Track, Stock Car, Sprinter 45D
27	43	SBC/2300 Ford	43	Sprinter Vertical Ports Offset out & down - RS 2300 Ford, Cosworth 2L Midget
	28	Datsun InLine		LSM Newman Sharp Datsun
29	42	SBC/FE Ford	42	Canady Brothers midget - RS 427 FE Cobra Mount 2nd Gen AOS Mount
	30	351C Ford		RSM Vertical Ports - direct bolt on
	31	Universal		Bert/Brinn Transmission
32	38	SBC	38	High position direct mount blade
	33	Datsun		LSM Electromotive
	35	Tilton Bellhsg		Inverted 26 blade
	39	Mazda		Rotary
	41	Suzuki		Hayabusa
	45	Dodge V-6		Shelby Can Am
	47	Chevy LS		Street Car Scavenge Pump Mount
	48	EEl Timing Cover		SBF Elliot timing cover mount option
	50	Universal		6" Diameter Blank Round Plate
	51	Universal		3-1/4x5" Perpendicular Port Blade - Horizontal Blade, Vertical flow
	52	Universal		3-1/4x5" Ports Parrallel to Blade - Horizontal Blade, Horizontal Flow
<b>S1 Plate Mount Belt &amp; Cam Drive Mounting Bodies</b>				
60		Timing Cover		Donovan 417 - Original Style, replaces stock cover plate
61		Accessory Drive		Arias 8.3 Litre/Fontana Rhino, replaces stock cover plate
62		Accessory Drive		Arias 10 Litre, replaces stock cover plate
63		Accessory Drive		AR - Seyler Ford, replaces stock cover plate
64		Timing Cover		JFK style, direct timing cover mount
65		Timing Cover		6" Diameter O-ring Arias - Donavan - Keith Black Big Block Gear Drive, replaces stock cover plate
66		Motor Plate		Adjustable Motor Plate Mount - 4" x 4" Pattern - Reverse Rotation
67		Timing Cover		KSE New Style, direct timing cover mount
68		Motor Plate		Trett / Small Motor Plate Mount - 1.375"x3.450" Pattern
69		Universal		Esslinger Midget Motor Water Pump - Donovan 417 Gear Drive Cover, mounts to stock cover plate
70		Motor Plate		Aircraft Accessory Pad Mount
71		Motor Plate		F5000 Extended nose
72		Cam Cover		Cosworth/Offy cam mount - 4 bolt pattern
73		Universal		Bolt thru top mount
74		Timing Cover		GT BBC Timing cover
75		Gearbox		Hyroplane turbine gearbox mount
76		Universal		Bolt thru side mount
77		Gear Drive Cover		Donovan Small Block, replaces stock cover plate
78		Shumaker		Harley Davidson Side Case
79		LS1		LS1 Chevrolet Small Block Air Conditioner Bracket Mount - Angled Ports
80		Timing Cover		RCD Big Block Gear Drive Cover
81		Motor Plate		Adjustable Motor Plate Mount - 4" x 4" Pattern - Standard Rotation
82		LS1		LS1 Direct to block Bolt on Mount - Virtical Port Flow
83		LS1		LS1 Chevrolet Small Block Air Conditioner Bracket Mount - Vertical Ports
84		Accessory Drive		Swivel Clamp Mount - RCD Offset/Tri Drive
85		Dodge Hemi		Street Engine Single Section Pump Mount
86		Dodge Hemi		Fuel/Funny Car Double Section Pump Mount



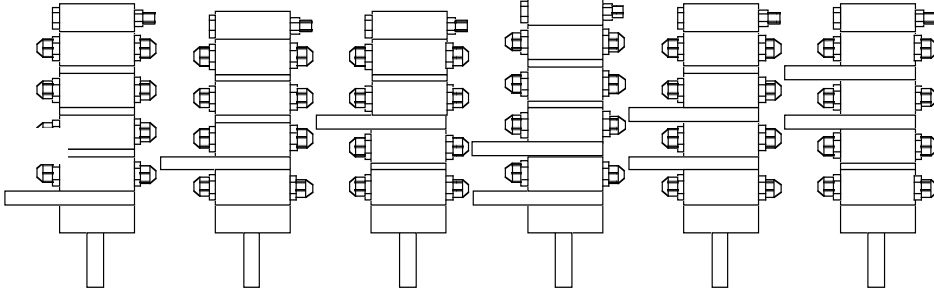
6 Stage Pumps



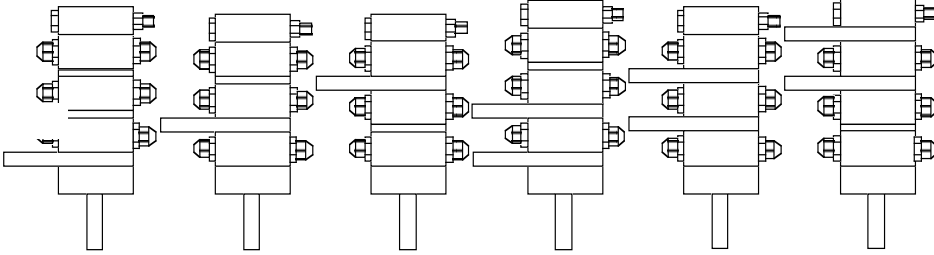
5 Stage Pumps



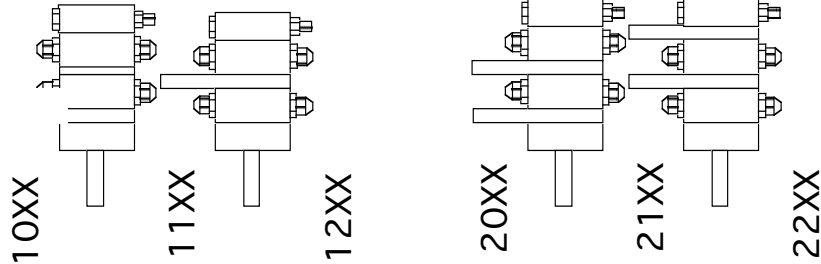
4 Stage Pumps



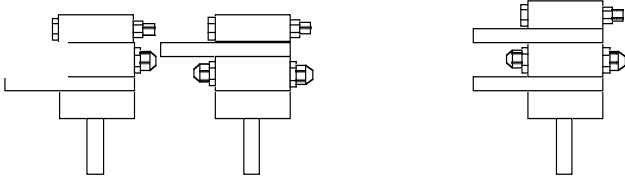
3 Stage Pumps



2 Stage Pumps



1 Stage Pumps



Aviaid.com Oil Systems  
(818) 998-8991

Typical pump mounting  
blade configurations

Shaft extension = 2"

Front bearing body = 1"

Mounting blades = 1/2"

Separators = 1/4"

1st number indicates  
number of mounting blade

2nd number indicates  
position of 1st mounting  
blade

Configuration numbers ap  
to all pumps.

"xx" = blade or mount ID  
number

Contact us for additional  
configuration options and  
special circumstances