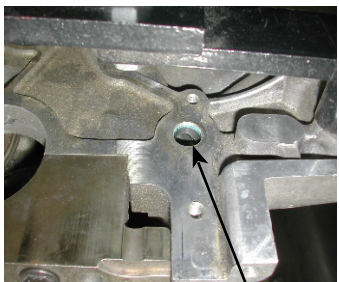


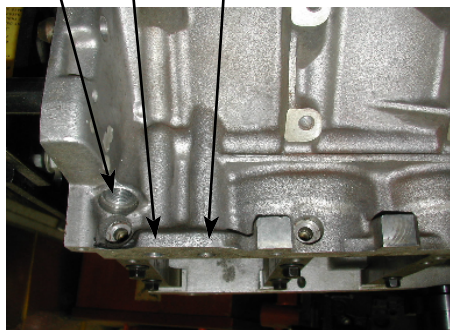
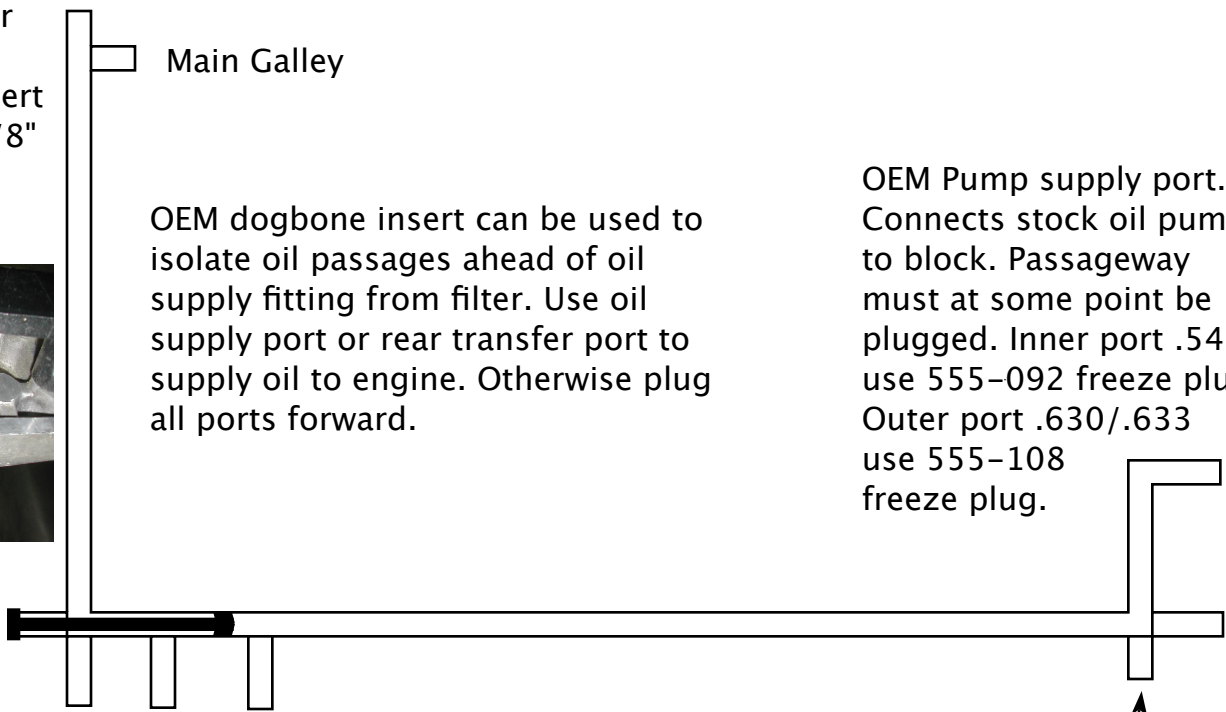
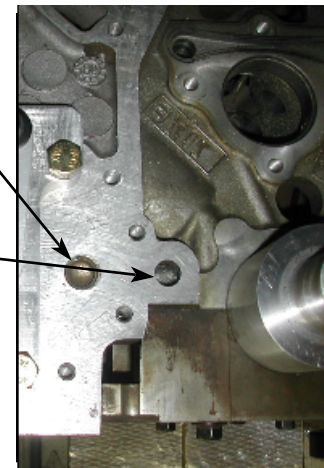
AVIAID LS OEM Oil Plumbing Diagram

Rear of OEM lower galley. Plug with OEM dogbone insert or freeze plug. 5/8"



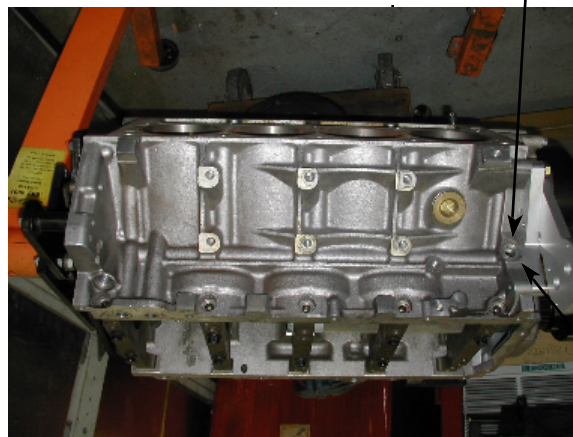
OEM dogbone insert can be used to isolate oil passages ahead of oil supply fitting from filter. Use oil supply port or rear transfer port to supply oil to engine. Otherwise plug all ports forward.

OEM Pump supply port. Connects stock oil pump to block. Passageway must at some point be plugged. Inner port .543/.548 use 555-092 freeze plug. Outer port .630/.633 use 555-108 freeze plug.



OEM transfer port. Transfers oil from lower galley to main galley. 16MM screw port, use AVIAID fitting to supply oil to engine or plug.

OEM oil filter ports. Front port supplies oil to filter, must be plugged. .510/.518 use 555-074 freeze plug. Rear port from filter to block can supply engine or must be plugged. .545/.550 use 555-092 freeze plug.



OEM galley port. Transfers oil to rear of block. Passageway must at some point be plugged. 5/8"

OEM transfer port. Transfers oil from oil pump to lower galley. 16MM screw plug must be installed.