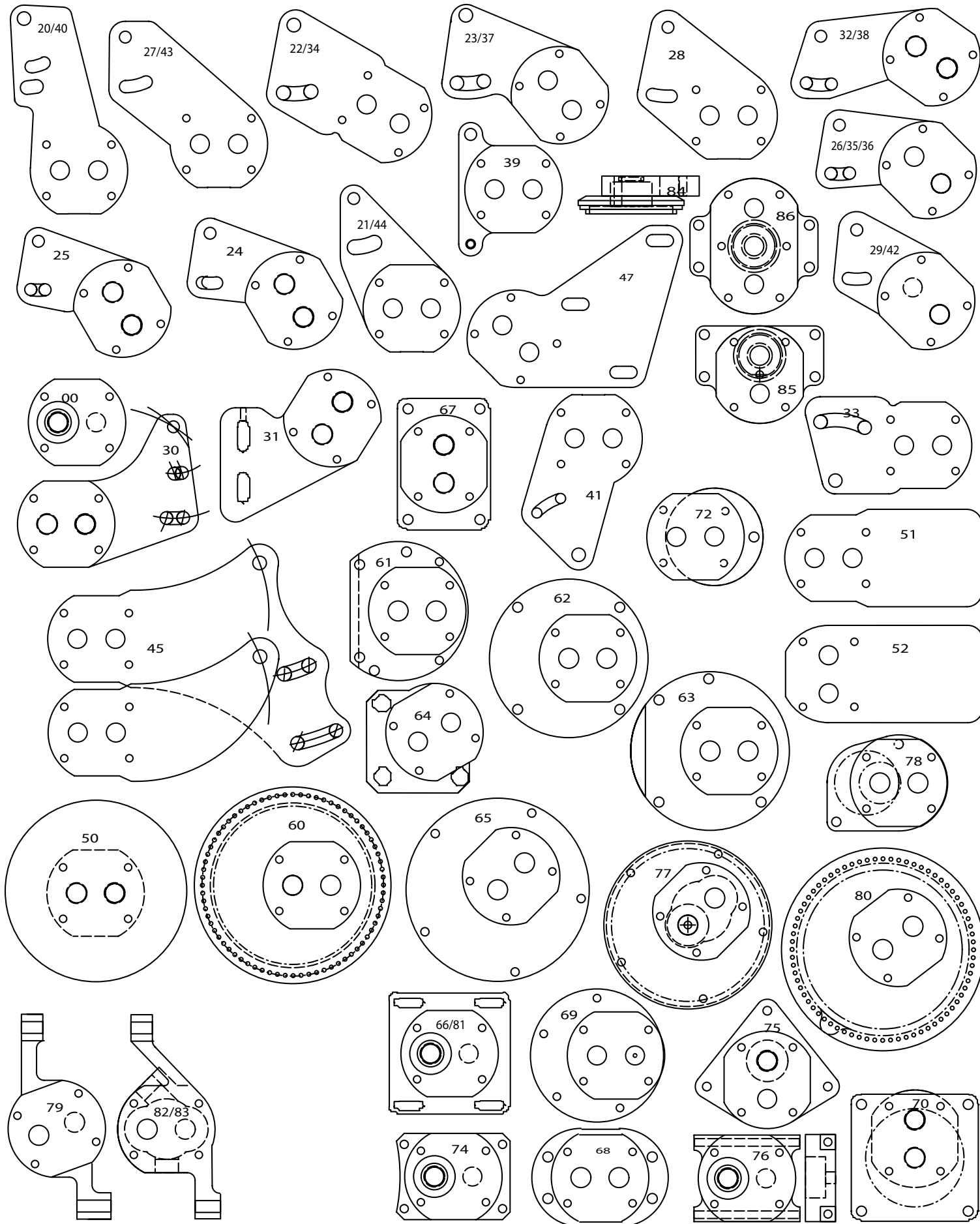


MOUNTING BLADES



AVIAID

SERIES I

RACING'S MOST VERSATILE EXTERNAL OIL PUMP SYSTEM

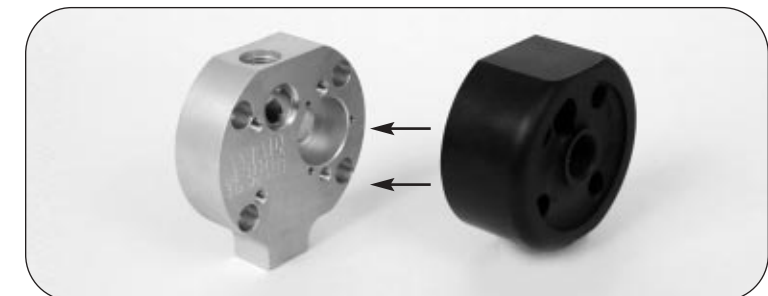
- 19 Sections
- 13 Separators
- 8 Pump Adapters
- 6 Rear Pump Ends
- 2 Regulators
- 2 Front Pump Ends
- 1 Filer Adapter
- 1 Pressure Section Rotator
- 3 Accessory Drives
- 46 Mounting Blades

Get the optimum combination of pressure and scavenging with Aviaid's race-proven Series I pumps. Select your component needs from this list or call Aviaid's tech staff at 818-998-8991 for a recommendation as to your particular application.



NON-REGULATED PUMP ENDS

Part No.	Description
30610-00	Non-regulator pump end – standard or reverse rotation
30610-01	Non-regulator pump end – std. or reverse rotation, w/inlet & outlet ports
30610-02	Non-regulator pump end – std.rotation, for integral pump end filter adapter



FILTER ADAPTER

Part No.	Description
40106	Filter adapter – pump end (use with standard rotation pump end)



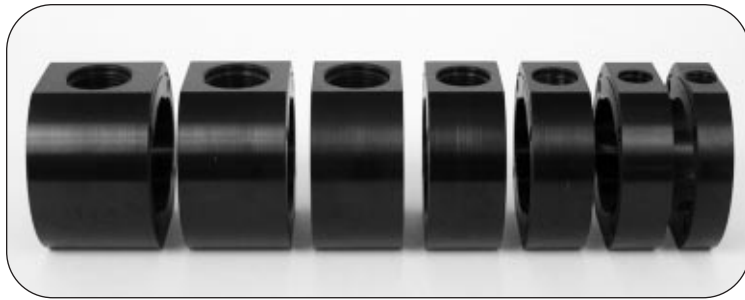
BELT DRIVE PUMP FRONTS

Part No.	Description
30500-00	Belt drive pump front – with O-ring
30500-01	Belt drive pump front – without O-ring



REGULATORS

Part No.	Description
30600	Regulator – pump end, standard rotation
30605	Regulator – pump end, reverse rotation
30604	Regulator – standard rotation – ported for integral oil filter adapter
30607	Regulator – mid-pump, standard & reverse rotation



SECTIONS (ALUMINUM)

Part No.	Description
30160	Section (aluminum) 2.000"
30150	Section (aluminum) 1.750"
30140	Section (aluminum) 1.500"
30130	Section (aluminum) 1.250"
30120	Section (aluminum) 1.000"
30110	Section (aluminum) .840"
30100	Section (aluminum) .600"



SECTIONS (CAST IRON)

Part No.	Description
30165	Section (cast iron) 2.000"
30155	Section (cast iron) 1.750"
30145	Section (cast iron) 1.500"
30135	Section (cast iron) 1.250"



SECTIONS (DIESEL)

Part No.	Description
30132	Section (diesel) 1.250"
30122	Section (diesel) 1.000"



SECTIONS (DIRECT MOUNT)

Part No.	Description
30144	Section (direct mount) 1.500"
30134	Section (direct mount) 1.250"



ANGLED SECTIONS

Part No.	Description
30141	Section (45° port) 1.500"
30131	Section (45° port) 1.250"
30133	Section (90° port) 1.250"



MULTI IN/OUT SECTION

Part No.	Description
30166	Section (2 inlet, 1 outlet, 2 pickup) 2.000"



BLANK SEPARATORS

Part No.	Description
30485-00	Blank separator .500" wide
30480-00	Blank separator .250" wide
30475-00	Blank separator .160" wide
30470-00	Blank separator .030" wide



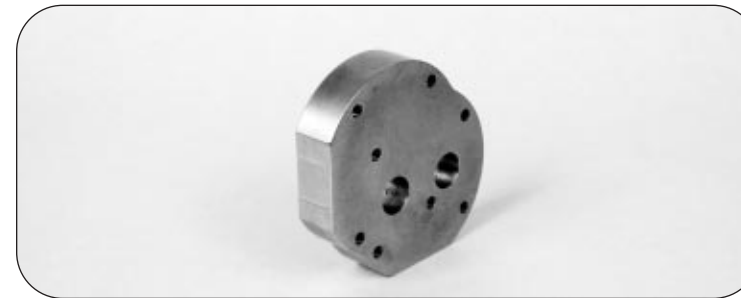
CROSS-FLOW SEPARATORS

Part No.	Description
30485-01	Cross-flow separator .500" wide
30480-01	Cross-flow separator .250" wide
30475-01	Cross-flow separator .160" wide
30470-01	Cross-flow separator .030" wide



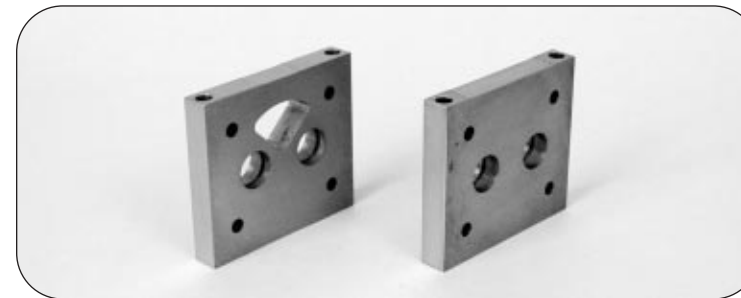
SPECIAL SEPARATORS

Part No.	Description
30485-06	Cross-flow separator .500" wide w/O-ring
30485-05	Blank separator .500" wide w/O-ring
30485-03	Shaft bearing support section (cross-flow) .500" wide
30485-02	Shaft Bearing support section (blank) .500" wide
30485-04	Double seal separator (double O-rings, double shaft seal)



PRESSURE SECTION ROTATOR

Part No.	Description
30406	90° Pressure section rotator



VERTICAL PUMP MOUNTS

Part No.	Description
30400-73	Vertical mount pump adapter – blank
30405-73	Vertical mount pump adapter – cross-flow



HORIZONTAL PUMP MOUNTS

Part No.	Description
30400-76	Horizontal mount pump adapter – blank
30405-76	Horizontal mount pump adapter – cross-flow
30404-76	Horizontal mount pump adapter – double sealed
30403-76	Horizontal mount pump adapter – shaft bearing support section w/crossport
30401-76	Horizontal mount pump adapter – regulator port w/O-ring
30500-76	Horizontal mount pump adapter – pump front



SHAFT & GEAR ASSEMBLIES

Part No.	Description
30200	0.600" Gear Set Steel
30210	0.840" Gear Set Steel
30220	1.000" Gear Set Steel
30222	1.000" Gear Set Steel w/ Teflon Coated Idler for diesel fuel
30230	1.250" Gear Set Steel
30232	1.250" Gear Set Steel w/ Teflon Coated Idler for diesel fuel
30240	1.500" Gear Set Steel
30250	1.750" Gear Set Steel
30260	2.000" Gear Set Steel
30265	Coat Gear Set
30310	Drive Shaft 1 Key Standard
30315	Drive Shaft 1 Key Special
30320	Drive Shaft 2 Key Standard
30325	Drive Shaft 2 Key Special
30330	Drive Shaft 3 Key Standard
30335	Drive Shaft 3 Key Special
30340	Drive Shaft 4 Key Standard
30345	Drive Shaft 4 Key Special
30350	Drive Shaft 5 Key Standard
30355	Drive Shaft 5 Key Special
30360	Drive Shaft 6 Key Standard
30365	Drive Shaft 6 Key Special
30371	Drive Shaft 7 Key Standard
30375	Drive Shaft 7 Key Special
30380	Drive Shaft 8 Key Standard
30387	Drive Shaft 8 Key Special
30370	For Drive Shaft with Fuel Drive, ADD
30381	1 Stage Idler Shaft
30382	2 Stage Idler Shaft
30383	3 Stage Idler Shaft
30384	4 Stage Idler Shaft
30385	5 Stage Idler Shaft
30386	6 Stage Idler Shaft
30391	Pump Studs, 1 Stage - set of 4
30392	Pump Studs, 2 Stage - set of 4
30393	Pump Studs, 3 Stage - set of 4
30394	Pump Studs, 4 Stage - set of 4
30395	Pump Studs, 5 Stage - set of 4
30396	Pump Studs, 6 Stage - set of 4



ACCESSORY DRIVES

Part No.	Description
30550	Hilborn 3-bolt Fuel Drive Plate w/seals, hardware, insulator & drive screw
30551	Enderle 4-bolt Fuel Drive Plate w/seals, hardware, insulator & drive screw
30552	Fuel Drive Plate, blank w/seals, hardware, phenolic insulator & drive screw
30553	Power Steering Drive for KSE w/seals, hardware & drive screw
30554	Power Steering Drive for KRC w/seals, hardware & drive screw
30555	Power Steering Drive, Saginaw T/C pump w/seals, hardware & drive screw